

shademaker



By fusing the imagination of outdoor fashion with the practicalities of environmental performance, Shademaker represents “the apex of shade design”. For more than a decade Shademaker has been the premier line of shade for the finest restaurants, resorts and country clubs around the world.





Shademaker offers a complete line of shade solutions, with many innovative styles and distinct configurations. Shademaker can help you create a sophisticated and functional environment in any setting.

centerpost design

libra

page 4



astral-tc

page 8



sidepost design

orion

page 12



galaxy

page 16



sirius

page 20



polaris

page 24



shademaker



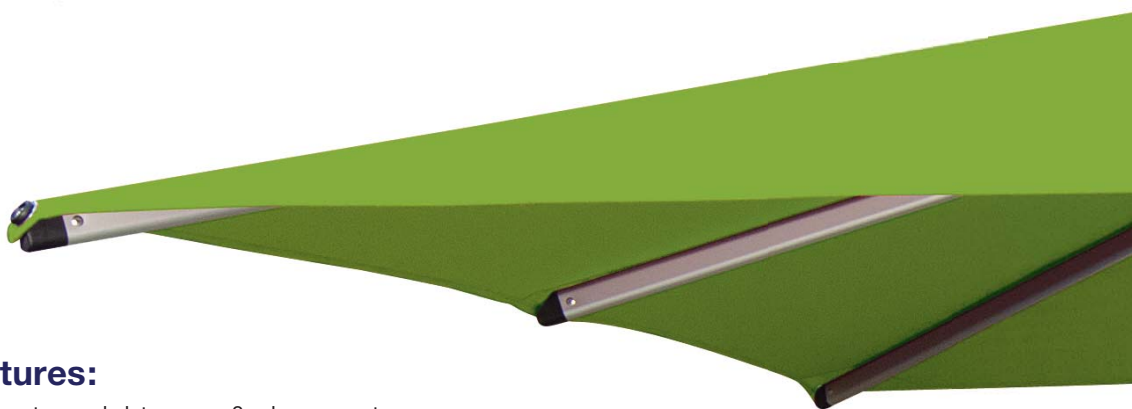


libra



libra

The Libra style features our counterweight open and close system. Ease of use and simplicity of design.



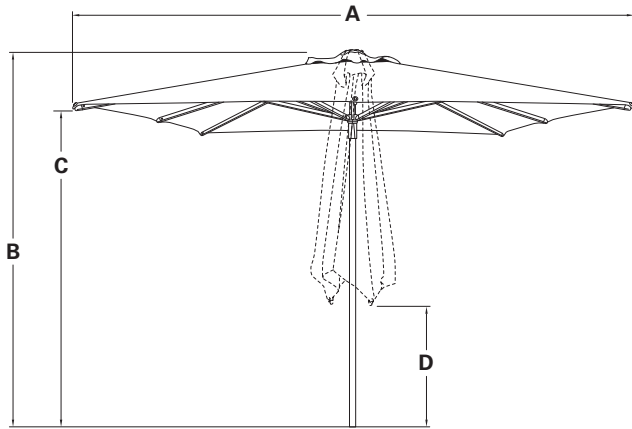
Features:

- Counterweight open & close system
- Durable high performance hub and fittings
- External mast stem for mount kit and steel base weight options (*included*)
- Protective cover (*included*)

MOUNT OPTIONS/BASES:

See page **28** for concrete and in-ground mounting options
See pages **29 & 31** for steel and cast aluminum bases

– Visit www.shademakerusa.com for more product information –



Mast Type: 1.57" Round - Centerpost

Wall Thickness: .051" Arms
.079" Mast

Applications: Commercial and Residential

Finish: Silver Shadow[†]

[†]See page 35 for Special Order Frame Finishes

Item No.	A Total Width	B Total Height	C Height to Arm	D Canopy Clearance Closed
LIBRA-20S	6' 6"	7' 8"	6' 5"	3' 1"
LIBRA-25S	8' 2"	8'	6' 5"	2' 2"
LIBRA-25	7' 6"	7' 8"	6' 8"	3' 7"

Item No.	Size		Canopy Shape	Coverage	Ribs		Min. Base Weight*
	meters	feet					
LIBRA-20S	2.0m	6' 6"	Square	43 sq. ft.	4		100 lbs.
LIBRA-25S	2.5m	8' 2"	Square	67 sq. ft.	8		100 lbs.
LIBRA-25	2.5m	8' 2"	Octagon	52 sq. ft.	8		100 lbs.

* NOTE: Recommended minimum weight requirements for free-standing applications.

Striped fabrics must be ordered in pairs, due to cutting requirements.



shademaker






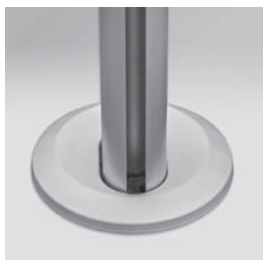
astral-to

astral-tc

The Astral-TC is designed to close over table and chairs. Simply turn the crank handle only 7 times to open this gigantic umbrella.

Features:

- Durable high performance hub and fittings
- Simple to operate crank lift system
- Telescopic mast allows umbrella to be closed, so it does not hit the table beneath it.
- Removable crank handle
- Internal mast stem
-  - Optional internal mast stem cover (*included*)
- Protective cover (*included*)



**optional internal
mast stem cover**
(shown on orion)

MOUNT OPTIONS/BASES:

See page **28** for concrete and in-ground mounting options
See page **29** for steel bases

– Visit www.shademakerusa.com for more product information –

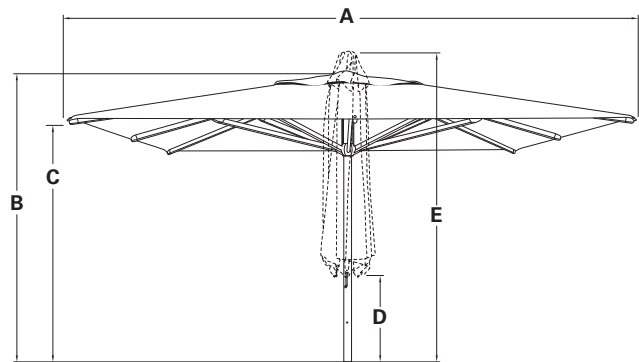
Mast Type: 3.25" Round - Centerpost

Wall Thickness: .118" Arms
.10" Mast

Applications: Commercial

Finish: Silver Shadow[†]

[†]See page 35 for Special Order Frame Finishes



Item No.	A Total Width	B Total Height Opened	C Height to Arm	D Canopy Clearance Closed	E Total Height Closed
ASTRAL-TC-35S	11' 5"	9' 2"	7' 5"	3' 4"	11' 5"
ASTRAL-TC-40S	13' 1"	9' 4"	7' 4"	2' 11"	12'
ASTRAL-TC-50S	16' 4"	9' 6"	7' 5"	1' 8"	13' 3"
ASTRAL-TC-50	15' 2"	9' 2"	7' 5"	3' 4"	12' 3"

Item No.	Size		Canopy Shape	Coverage	Ribs			Min. Base Weight*
	meters	feet						
ASTRAL-TC-35S	3.5m	11' 5"	Square	131 sq. ft.	8			400 lbs.
ASTRAL-TC-40S	4.0m	13' 1"	Square	172 sq. ft.	8			500 lbs.
ASTRAL-TC-50S	5.0m	16' 4"	Square	266 sq. ft.	8			700 lbs.**
ASTRAL-TC-50	5.0m	16' 4"	Octagon	210 sq. ft.	8			600 lbs.**

* NOTE: Recommended minimum weight requirements for free-standing applications.

** Permanent mount recommended for ASTRAL-TC-50 styles see page 28.

Striped fabrics must be ordered in pairs, due to cutting requirements.

shademaker








orion

orion

Our best-selling sidepost style rotates 360° and is the ideal solution for most commercial applications.

Use of the Mount Kits provide substantial cost savings and creates the preferred small footprint.

Features:

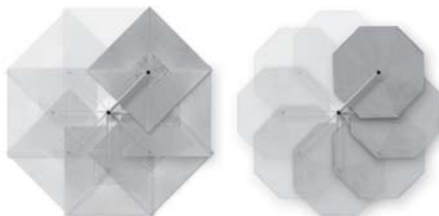
- Durable high performance hub and fittings
- High-grade stainless steel cable
- Simple to operate crank lift system
-  - Removable crank handle
-  - (8) 45° locking rotating positions
- Built-in light adapter
- Internal mast stem
-  - Optional internal mast stem cover (*included*)
- Protective cover (*included*)

MOUNT OPTIONS/BASES:

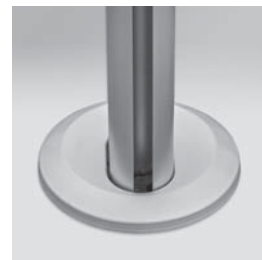
See page **28** for concrete and in-ground mounting options

See page **29** for steel bases

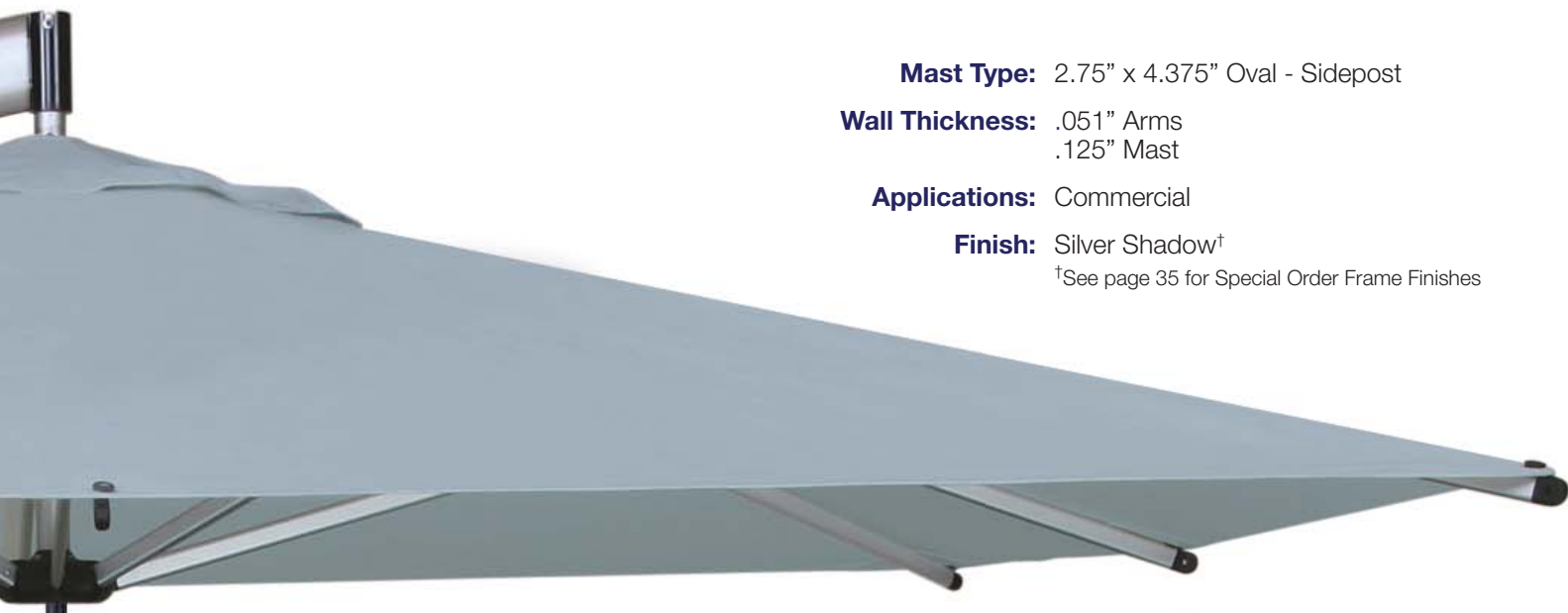
– Visit www.shademakerusa.com for more product information –



360° rotation



**optional internal
mast stem cover**



Mast Type: 2.75" x 4.375" Oval - Sidepost

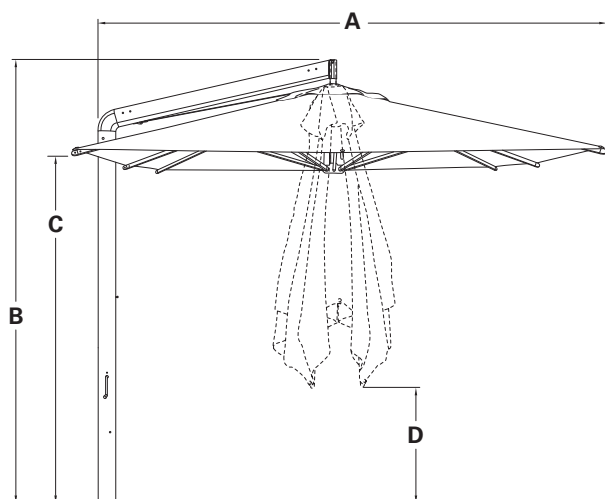
Wall Thickness: .051" Arms
.125" Mast

Applications: Commercial

Finish: Silver Shadow[†]

[†]See page 35 for Special Order Frame Finishes

**Canopy structure easily
detaches for storage**



Item No.	A Canopy to Mast Width	B Total Height	C Height to Arm	D Canopy Clearance Closed
OR-27S	9' 6"	9' 3"	6' 9"	2' 4"
OR-30S	10' 6"	9' 7"	6' 11"	1' 9"
OR-30	9' 4"	8' 11"	7'	3' 6"
OR-35	11' 4"	9' 4"	7' 4"	2' 9"
OR-40	12' 3"	9' 10"	7' 4"	2' 6"

Item No.	Size		Canopy Shape	Coverage	Ribs			Min. Base Weight*
	meters	feet						
OR-27S	2.7m	8' 9"	Square	77 sq. ft.	8			350 lbs.
OR-30S	3.0m	9' 9"	Square	95 sq. ft.	8			350 lbs.
OR-30	3.0m	9' 9"	Octagon	75 sq. ft.	8			350 lbs.
OR-35	3.5m	11' 5"	Octagon	103 sq. ft.	8			450 lbs.
OR-40	4.0m	13' 1"	Octagon	134 sq. ft.	8			500 lbs.

* NOTE: Recommended minimum weight requirements for free-standing applications.

Striped fabrics must be ordered in pairs,
due to cutting requirements.

shademaker

Marriott





galaxy



galaxy

Our Galaxy is the GIANT of all sidepost styles; superior in design, durability and size.

Features:

- Durable high performance hub and fittings
- Internal mast stem
- Protective cover (*included*)

MOUNT OPTIONS/BASES:

See page **28** for concrete and in-ground mounting options

See page **30** for heavy-duty steel bases

– Visit www.shademakerusa.com for more product information –

NOTE: It is imperative that the eight (8) spacer buttons (white plastic cups/screws) are installed after the canopy is opened for the first time.



Item No.	Size		Canopy Shape	Coverage	Ribs			Min. Base Weight
	meters	feet						
GALAXY-35S	3.5m	11' 5"	Square	131 sq. ft.	8			1,000 lbs.*
GALAXY-40S	4.0m	13' 1"	Square	172 sq. ft.	8			1,400 lbs.*
GALAXY-50	5.0m	16' 4"	Octagon	210 sq. ft.	8			1,800 lbs.*

* Permanent mount recommended - see page 28

Striped fabrics must be ordered in pairs, due to cutting requirements.

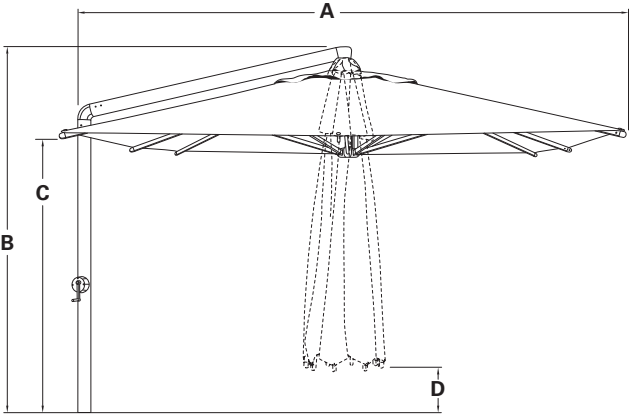
NOTE: Warranty will be voided if spacer buttons are not installed properly.

Mast Type: 3.25" x 4.75" Oval - Sidepost

Wall Thickness: .118" Arms
.107" Mast

Applications: Commercial

Finish: Silver Shadow[†]
[†]See page 35 for Special Order Frame Finishes



Item No.	A Canopy to Mast Width	B Total Height	C Height to Arm	D Canopy Clearance Closed
GALAXY-35S	12' 11"	10' 1"	7' 11"	1' 4"
GALAXY-40S	14' 6"	9' 10"	7' 5"	2'
GALAXY-50	16' 6"	10' 2"	7' 6"	1' 2"



shademaker





sirius




sirius

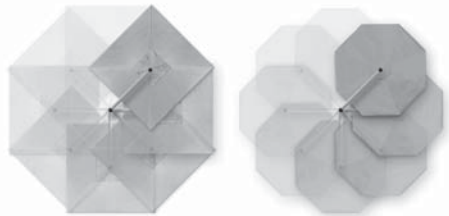
Introduced in 1998, the Sirius is the original Shademaker design. This innovative design rotates 360° and tilts. When not in use, the Sirius folds back to the mast in a clean, compact manner.

The perfect solution for residential pools, spas, patios and decks.

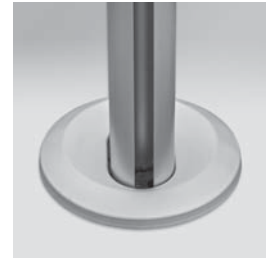
Use of the Mount Kits provide substantial cost savings and creates the preferred small footprint.

Features:

- Durable high performance hub and fittings
- Stainless steel hardware for longevity
- Simple to operate crank lift system
-  - Removable crank handle
-  - (8) 45° locking rotating positions
- Built-in light adapter
- Internal mast stem
-  - Optional internal mast stem cover (*included*)
- Protective cover (*included*)



360° rotation



optional internal mast stem cover

MOUNT OPTIONS/BASES:

See page **28** for concrete and in-ground mounting options

See page **29** for steel bases

– Visit www.shademakerusa.com for more product information –



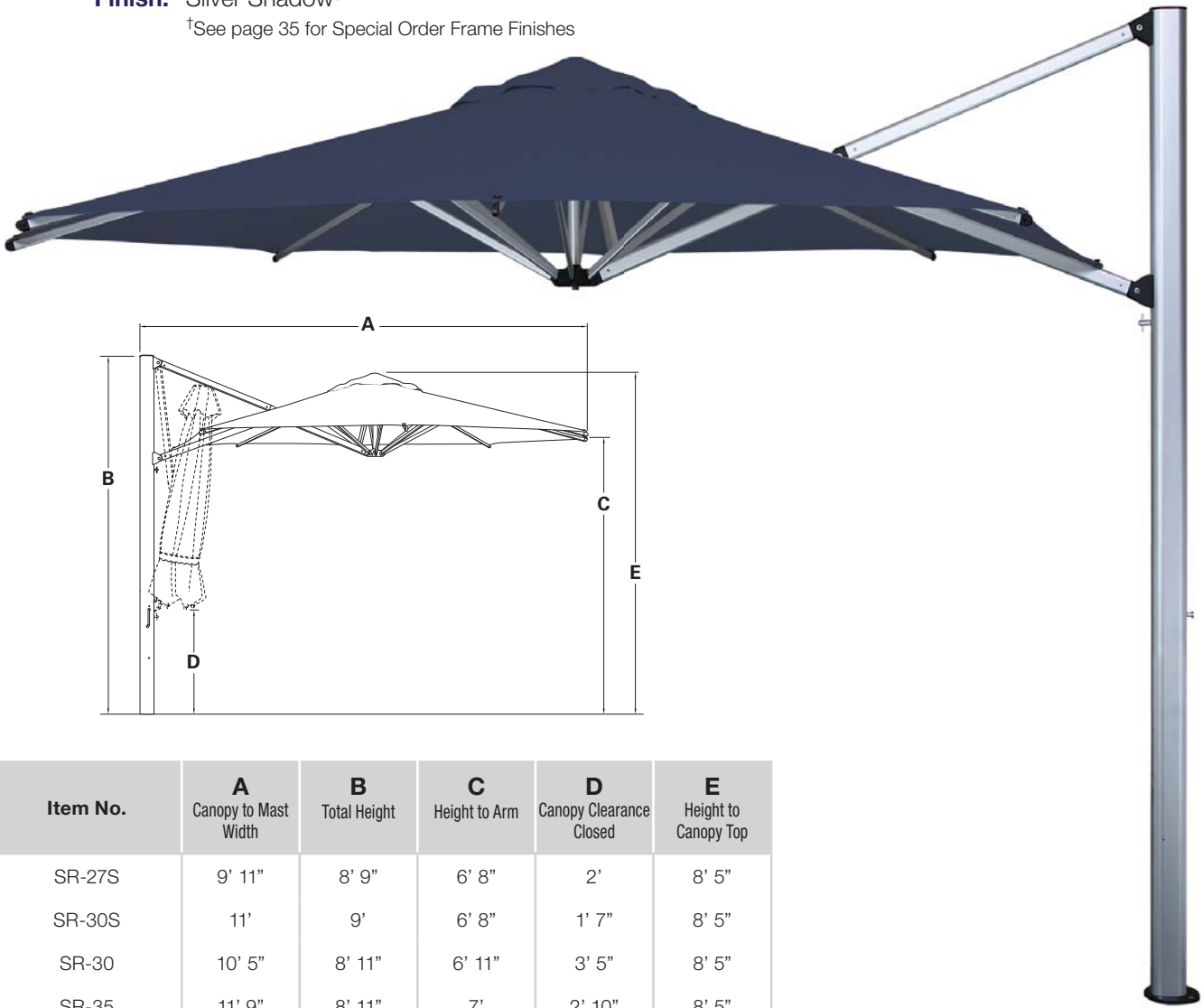
Mast Type: 2.75" x 4.375" Oval - Sidepost

Wall Thickness: .051" Arms
.125" Mast

Applications: Commercial and Residential

Finish: Silver Shadow†

†See page 35 for Special Order Frame Finishes



Item No.	A Canopy to Mast Width	B Total Height	C Height to Arm	D Canopy Clearance Closed	E Height to Canopy Top
SR-27S	9' 11"	8' 9"	6' 8"	2'	8' 5"
SR-30S	11'	9'	6' 8"	1' 7"	8' 5"
SR-30	10' 5"	8' 11"	6' 11"	3' 5"	8' 5"
SR-35	11' 9"	8' 11"	7'	2' 10"	8' 5"

Item No.	Size		Canopy Shape	Coverage	Ribs			Min. Base Weight*
	meters	feet						
SR-27S	2.7m	8' 9"	Square	77 sq. ft.	8			350 lbs.
SR-30S	3.0m	9' 9"	Square	95 sq. ft.	8			350 lbs.
SR-30	3.0m	9' 9"	Octagon	75 sq. ft.	8			350 lbs.
SR-35	3.5m	11' 5"	Octagon	103 sq. ft.	8			450 lbs.

* NOTE: Recommended minimum weight requirements for free-standing applications.

STRIPED FABRICS NOT AVAILABLE ON THIS STYLE.

shademaker






polaris

polaris

Both elegant and noble in design, the Polaris sidepost umbrella is easy to operate; combined with a unique tilting function makes it the perfect shade for commercial or residential use.

Use of the Mount Kits provide substantial cost savings and creates the preferred small footprint.

Features:

- Durable high performance hub and fittings
- Stainless steel hardware for longevity
- Simple to operate infinite tilt system
-  - (8) 45° locking rotating positions
- Built-in light adapter
- Internal mast stem



- Optional internal mast stem cover (*included*)
- Protective cover (*included*)

MOUNT OPTIONS/BASES:

See page **28** for concrete and in-ground mounting options

See page **29** for steel bases

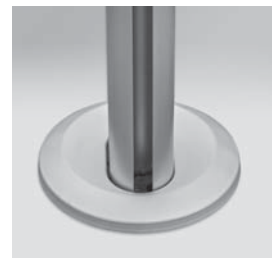
– Visit www.shademakerusa.com for more product information –



360° rotation



effortless crank & tilt function



optional internal mast stem cover

Mast Type: 3.125" x 4.75" Oval - Sidepost

Wall Thickness: .059" Arms
.125" Mast

Applications: Commercial and Residential

Finish: Silver Shadow†

†See page 35 for Special Order Frame Finishes



Item No.	A Canopy to Mast Width	B Total Height	C Height to Arm	D Canopy Clearance Closed	E Height to Canopy Top
POLARIS-30S	11'	9' 2"	7'	2' 4"	8' 8"
POLARIS-35S	12' 9"	9' 5"	7' 3"	1' 4"	9' 3"
POLARIS-40S	14' 3"	9' 6"	7' 3"	1' 1"	9' 8"

Item No.	Size		Canopy Shape	Coverage	Ribs			Min. Base Weight*
	meters	feet						
POLARIS-30S	3.0m	9' 9"	Square	95 sq. ft.	8			450 lbs.
POLARIS-35S	3.5m	11' 5"	Square	131 sq. ft.	8			550 lbs.
POLARIS-40S	4.0m	13' 1"	Square	172 sq. ft.	8			750 lbs.**

* NOTE: Recommended minimum weight requirements for free-standing applications.

** Permanent mount recommended for Polaris-40S style see page 28.

STRIPED FABRICS NOT AVAILABLE ON THIS STYLE.

shademaker



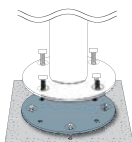
A photograph of a modern outdoor patio area. In the foreground, there are several rectangular planters made of light-colored concrete or stone. They contain various green plants, including a tall, thin plant with yellow flowers and a bushy plant with green leaves. Behind the planters, there are wooden benches with metal frames. The background shows a building with a dark, slatted wall and a wooden door. The text "bases & mount options" is written vertically in white on the right side of the image.

bases & mount options

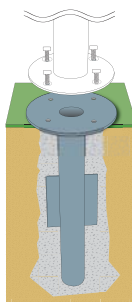
mount options

All Shademaker styles are designed to be mounted. Our Mount Kits (concrete and in-ground applications) are the recommended or preferred method to properly secure your umbrella.

mount kits for libra styles

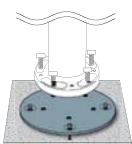


Item No.	Description	Plate Dia.	Thickness	Weight	Cube	
MKC21	concrete mount kit	8.46"	.47"	8 lbs.	.05	
		CASE PACK	CASE WEIGHT	CASE CUBE		
		10	83 lbs.	.46		

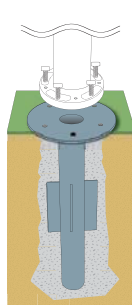


Item No.	Description	Plate Dia.	Thickness	Weight	Cube	
MKG21	in-ground mount kit	8.39"	.39"	14 lbs.	1.08	
		Stem Dia: 2.38" Depth: 19.6"	CASE PACK	CASE WEIGHT	CASE CUBE	
			4	59 lbs.	4.33	

mount kits for astral-tc, orion, polaris and sirius styles

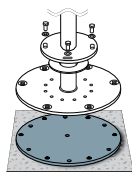


Item No.	Description	Plate Dia.	Thickness	Weight	Cube	
MKC17	concrete mount kit	8.5"	.63"	10 lbs.	.05	
		CASE PACK	CASE WEIGHT	CASE CUBE		
		5	51 lbs.	.39		

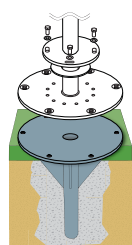


Item No.	Description	Plate Dia.	Thickness	Weight	Cube	
MKG17	in-ground mount kit	6.3"	.38"	12 lbs.	.70	
		Stem Dia: 2.38" Depth: 19.53"	CASE PACK	CASE WEIGHT	CASE CUBE	
			2	23 lbs.	1.4	

mount kits for galaxy styles



Item No.	Description	Plate Dia.	Thickness	Weight	Cube	
GMKC21	concrete mount kit	15.125"	.64"	34 lbs.	.238	



Item No.	Description	Plate Dia.	Thickness	Weight	Cube	
GMKG21	in-ground mount kit	15.75"	.63"	55 lbs.	4.33	
		Stem Dia: 2.7" Depth: 18.75"				

steel base frame & weights

Shademaker steel bases may be purchased individually or in multiple sizes and stacked to meet base weight requirements.

steel base weights for libra styles

(square)



Item No.	Weight	Size	Thickness
SB50SQ	50 lbs.	17"	.675"
SB100SQ	100 lbs.	24"	.675"
SB125SQ	125 lbs.	27"	.675"

Black finish

(round)



Item No.	Weight	Dia.	Thickness
SB50R	50 lbs.	19"	.675"
SB100R	100 lbs.	27"	.675"
SB125R	125 lbs.	30"	.675"

Black finish

geomet steel base weight for astral-tc, orion, polaris and sirius styles

NOTE: SM PLATE (Adapter Plate) REQUIRED



Item No.	Weight	Size	Thickness
SBGC200SQ	213 lbs.	36"	.6"

Silver finish

steel base weight combinations (stacked)

Steel base weights must begin with a 125 lb. weight (SB125SQ or SB125R).



300 lbs.: (2) SB125SQ + (1) SB50SQ (shown)

NOTE: When stacking steel base weights, the **SB50R** and **SB50SQ** CAN ONLY BE USED AS THE TOP WEIGHT.

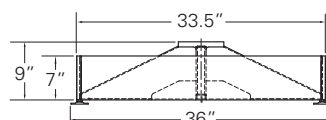
NOTE: SM PLATE (Adapter Plate) required when using SBGC200SQ steel base weight.



adapter plate
for SBGC200SQ

Item No.	Weight	Dia.	Thickness
SM PLATE	8 lbs.	8.5"	.5"

steel base frame for astral-tc, orion, polaris and sirius styles



Accommodates 16" stone pavers/weights (sold separately).

Item No.	Weight	Cube
BC05XM	72 lbs.	8.8

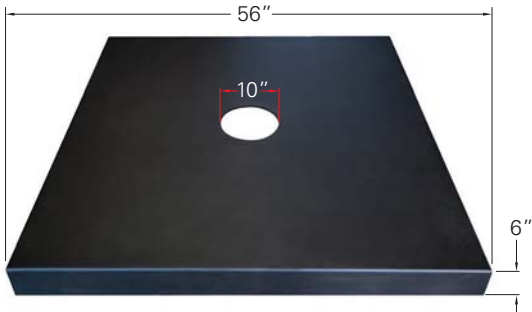
NOTE: SM PLATE (Adapter Plate) **NOT** REQUIRED



Stone pavers/weights not available through Shademaker.

zeus

heavy-duty steel base for galaxy styles



- Durable black powder coated steel lid
- Industrial grade steel frame
- Adjustable feet for leveling
- Reinforced padded corners to protect surfaces
- MADE IN THE USA

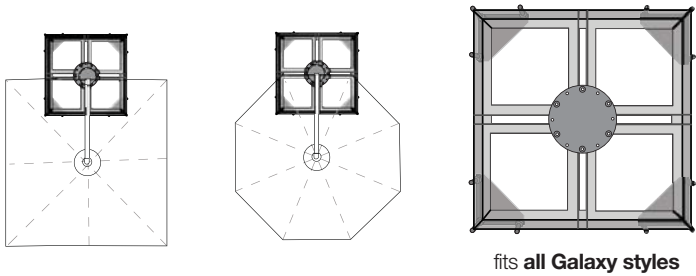


SB100SQ steel base weights must be used (each sold separately)

Item No.	Weight	
Z56569	225 lbs.	

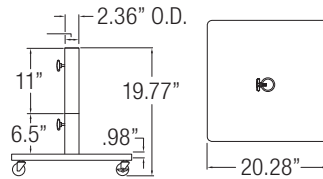
See Base Weight Matrix page 32

Center Mount



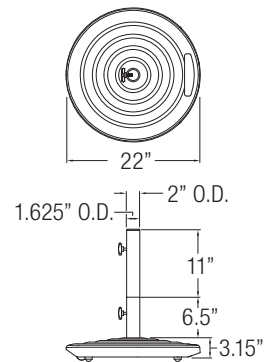
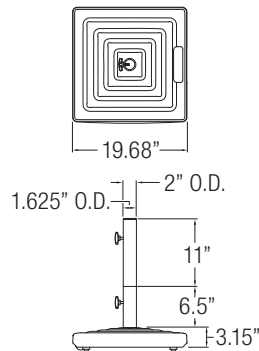
additional **bases** for **libra**

steel base w/casters for libra styles



Item No.	Finish	Weight	Cube	Pallet	
BSK1209	black	120 lbs.	1.4	16	

cast aluminum bases for libra styles

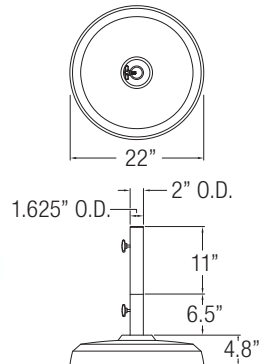


monaco (square) w/wheels & handle

Item No.	Finish	Weight	Cube	Pallet	
BKMSQ1005T	platinum	100 lbs.	1.75	24	
BKMSQ1009	black	100 lbs.	1.75	24	

monaco (round) w/wheels & handle

Item No.	Finish	Weight	Cube	Pallet	
BKM1005T	platinum	100 lbs.	1.75	24	
BKM1009	black	100 lbs.	1.75	24	

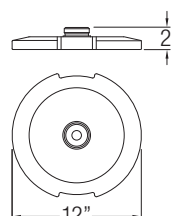


commercial

Item No.	Finish	Weight	Cube	Pallet	
BA1509	black	150 lbs.	2.8	12	

add-on weight for monaco styles

- Optional cast iron weight adds 30 lbs. to our cast aluminum base.



Item No.	Weight	
BW30	30 lbs.	

base weight matrix

Item No.	Size	Canopy Shape	Minimum Base Weight	Mount and Base Options		
				Recommended	Alternate 1	Alternate 2
LIBRA-20S	6' 6"	SQ	100 lbs.	(SB) steel base weight	BKMSQ1005T, BKMSQ1009	BSK1209
LIBRA-25S	8' 2"	SQ	100 lbs.	(SB) steel base weight	BKMSQ1005T, BKMSQ1009	BSK1209
LIBRA-25	8' 2"	OCT	100 lbs.	(SB) steel base weight	BKM1005T, BKM1009	BA1509
ASTRAL-TC-35S	11' 5"	SQ	400 lbs.	mount kit	BC05XM	(2) SBGC200SQ
ASTRAL-TC-40S	13' 1"	SQ	500 lbs.	mount kit	BC05XM	(3) SBGC200SQ
ASTRAL-TC-50S	16' 4"	SQ	700 lbs.	mount kit	(4) SBGC200SQ	n/a
ASTRAL-TC-50	16' 4"	OCT	600 lbs.	mount kit	BC05XM	(3) SBGC200SQ
OR-27S	8' 9"	SQ	350 lbs.	mount kit	BC05XM	(2) SBGC200SQ
OR-30S	9' 9"	SQ	350 lbs.	mount kit	BC05XM	(2) SBGC200SQ
OR-30	9' 9"	OCT	350 lbs.	mount kit	BC05XM	(2) SBGC200SQ
OR-35	11' 5"	OCT	450 lbs.	mount kit	BC05XM	(2) SBGC200SQ
OR-40	13' 1"	OCT	500 lbs.	mount kit	BC05XM	(3) SBGC200SQ
GALAXY-35S	11' 5"	SQ	1,000 lbs.*	galaxy mount kit	zeus	n/a
GALAXY-40S	13' 1"	SQ	1,400 lbs.*	galaxy mount kit	zeus	n/a
GALAXY-50	16' 4"	OCT	1,800 lbs.*	galaxy mount kit	zeus	n/a
SR-27S	8' 9"	SQ	350 lbs.	mount kit	BC05XM	(2) SBGC200SQ
SR-30S	9' 9"	SQ	350 lbs.	mount kit	BC05XM	(2) SBGC200SQ
SR-30	9' 9"	OCT	350 lbs.	mount kit	BC05XM	(2) SBGC200SQ
SR-35	11' 5"	OCT	450 lbs.	mount kit	BC05XM	(2) SBGC200SQ
POLARIS-30S	9' 9"	SQ	450 lbs.	mount kit	BC05XM	(2) SBGC200SQ
POLARIS-35S	11' 5"	SQ	550 lbs.	mount kit	BC05XM	(3) SBGC200SQ
POLARIS-40S	13' 1"	SQ	750 lbs.	mount kit	(4) SBGC200SQ	n/a

steel base frames

Item No.	Size	Frame Weight	Stone/Plate Weight	Totals	Stone/Steel plate details (Sold separately**)
BC05XM	33.5" x 7" x 9"	72 lbs.	576 lbs.	648 lbs.	Holds up to 16 pavers @ 36 lbs. each
ZEUS	6" x 56" x 56"	225 lbs.	1,600 lbs.	1,825 lbs.	Holds up to 16 - SB100SQ

Note: When stacking steel base weights, the **SB50R** and **SB50SQ** can only be used as the top weight.

* It is **HIGHLY recommended** that these items be mounted using our in-ground or concrete mount kits.

** Stone paver size is 16" square, SB50SQ is 17" square and SB100SQ is 24" square.

options

Item	Item No. (Protective Cover)	
LIBRA-20S	CD951	
LIBRA-25S	CD950	
LIBRA-25	CD951	

Item	Item No. (Protective Cover)	
ASTRAL-TC-35S	CD9004	
ASTRAL-TC-40S	CD9005	
ASTRAL-TC-50S	CD9005	
ASTRAL-TC-50	CD9004	

Item	Item No. (Protective Cover)	
OR-27S	CD26A-1	
OR-30S	CD26A-1	
OR-30	CD26A-3	
OR-35	CD26A-2	
OR-40	CD26A-1	

Optional Fabric	Price
Glen Raven Firesist®	Price Group 1 (+ 25%)

FIRESIST® awning fabric combines state-of-the-art flame retardant performance and UV resistance for the commercial awning, canopy and shade markets.

Specialty Canopy	Application
Valance	libra, orion, polaris and sirius astral-tc and galaxy astral-tc (5.0m) and galaxy (5.0m)
Logo	libra, astral-tc, orion, galaxy, sirius and polaris

Item	Item No. (Protective Cover)
GALAXY-35S	CD46-1
GALAXY-40S	CD46-3
GALAXY-50	CD46-1

Item	Item No. (Protective Cover)
SR-27S	CD16A
SR-30S	CD16A
SR-30	CD16A
SR-35	CD16A

Item	Item No. (Protective Cover)
POLARIS-30S	CD36-02
POLARIS-35S	CD36-02
POLARIS-40S	CD36-01

Visit www.shademakerusa.com
for more product information.



Logo on OR-30S

fabric collection



Price Group 1

Awning Grade

100% Solution-Dyed Acrylic

						
4634 White	4604 Natural	4642 Oyster	4683 Parchment	4633 Linen	4674 Wheat	4628 Toast
						
4672 Heather Beige	4620 Beige	4676 Cocoa	4648 Taupe	4651 Silver	4630 Cadet Grey	4636 Storm
						
4615 Smoke	4644 Charcoal Grey	4684 Slate	4608 Black	4632 Ivy	4637 Forest Green	4671 Fern
						
4668 Aspen	4688 Basil	4685 Ginkgo	4600 Erin Green	4645 Seagrass Green	4673 Spa	4643 Persian Green
						
4623 Aquamarine	4610 Turquoise	4612 Aruba	4664 Sea	4669 Azure	4675 Capri	4624 Sky Blue
						
4641 Sapphire Blue	4652 Mediterranean Blue	4601 Pacific Blue	4679 Ocean Blue	4678 Marine Blue	4626 Navy	4646 Captain Navy
						
4659 Ember	4665 Concord	4603 Jockey Red	4666 Logo Red	4631 Burgundy	4622 Terracotta	4667 Mahogany
						
4640 Black Cherry	4621 True Brown	4689 Rust	4677 Tuscan	4609 Orange	4602 Sunflower Yellow	4635 Buttercup



frame finish collection



**Special order frame finishes have a longer lead time. Please contact your sales representative for more information.*

maintenance

maintaining the shademaker frame and fittings

1. Hose mast and frame with water periodically, more often if installation is in a salty or industrial environment.
2. Inspect the installation fitting, mount bolts, rib spacers, etc. on a regular basis and tighten if necessary.
3. Lubricate the track and slider car mechanism as needed to enhance the ease of operation. We recommend using DuPont™ Dry Film Lubrication Products.

maintaining the shademaker canopy fabric

1. Clean up spills and stains right away. Spills can be removed by using a clean absorbent cloth.
2. For general maintenance, use a soft brush to remove dust and dry soil. Wash down with clean, warm water (i.e., garden hose) every so often to avoid dirt becoming ingrained. Allow the fabric to air dry before closing the canopy.
3. If a thorough cleaning is necessary, sponge over the fabric using a mild soap solution (2% solution). Rinse well with plenty of water to remove all soap residue.
4. Never use detergents, cleaning fluids or solvents. Grease and oil stains may be removed by using turpentine or similar with an absorbent cloth.
5. Please visit the fabric websites for more details: www.shademakerusa.com or www.sunbrella.com
6. Use protective canopy cover during storage or when not in use.



general guidelines

1. Shademaker highly recommends that no umbrella, regardless of size or weight, ever be left unattended in the open position. In windy conditions, it is further recommended that umbrellas be closed, removed from their base, and stored, or laid horizontally. This will reduce the risk of damage to your umbrella, furniture, and other belongings or property. To ensure stability of your umbrella, please observe proper placement, and use sufficient weight (base). This catalog contains minimum recommendations for necessary weight; but this can vary, depending on the conditions in your particular area.
2. NOTE: Wind damage (or any damage caused by acts of nature) is not covered under warranty.
3. Sufficient base weight must be used to secure umbrellas at all times. Please see individual product pages for recommended minimum weight requirements for free-standing applications. Mounting your umbrella to an existing deck or patio is always the preferred method of securing your umbrella above all other methods. We recommend a licensed contractor to secure your Shademaker umbrellas.

warranty

Shademaker manufactures all its shade styles from the finest aluminum alloys to ensure the strength, durability, and integrity of each and every style. We pride ourselves as a totally vertical operation. This means that we manufacture and produce over 90% of the components used in our products from the raw state. We can monitor every stage of the manufacturing process and maintain a consistent level of quality.

Our only business and focus is shade and shade type products. Our goal is that each and every Shademaker style will exceed your expectations at a competitive price that will make you smile.

Our Limited Warranty is outlined below by individual styles. NOTE: Wind damage is not covered under any manufacturer's warranty.

Our umbrellas are serviceable, meaning that parts can be ordered under warranty at no charge, if found that the damage is a manufacture defect and/or purchased out of warranty to make them whole again.

5 Year Limited Warranty includes the LIBRA, ASTRAL-TC, ORION, GALAXY, SIRIUS and POLARIS styles. This includes the mast, boom, head fitting, elbow, center pole/sidepost, arms, ribs, top and bottom hub, and stainless steel hardware only. If there is damage under the warranty, Shademaker will replace and/or repair any item listed in this category at its discretion. Labor charges are not covered under this limited warranty.

10 Year Limited Warranty includes the Sunbrella® awning & marine grade Fabric Collection. Visit www.sunbrella.com/warranty for more details. Labor charges are not covered under this limited warranty.

The 5 Year Limited Warranty also applies to Sunbrella Firesist®, Sunbrella Firesist® PLUS and Sunbrella® furniture grade, and O'bravia® awning grade fabrics. Labor charges are not covered under this limited warranty.

1 Year Limited Warranty covers base wheels and the powder coat finish on all bases. If the powder coat finish flakes, bubbles, peels or loses color; Shademaker will re-finish or replace the defective bases at its discretion. Normal wear and tear is not covered under this limited warranty. Labor charges are not covered under this limited warranty.

Exclusions: Wind damage, acts of nature (such as, but not limited to, freezing or any type of extreme weather). Failures caused by abusive use and normal wear and tear are not covered under this warranty. Any Galaxy style that does not have spacer buttons installed.

Those filing warranty claims will be responsible for all shipping, handling, and freight charges on all claims to Shademaker in Baldwin Park, CA. All warranty claims must be submitted with the original proof of purchase, date of purchase, name of dealer, and the description of the damage. The Shademaker warranty is not transferable. Shademaker reserves the right to repair, replace, and/or redesign any product that is returned under a warranty claim.

For our current warranty information, please visit www.shademakerusa.com.