

# Telescope

CONTRACT FURNITURE USA | 1903



**2023  
CONTRACT  
COLLECTION**





## Proudly made in the USA Since 1903

Our 1,000,000 square foot facility in upstate New York means a huge variety of products, the best quality, and fast consistent delivery.

**Who we are** - Telescope Casual Furniture has remained a successful family-owned and operated U.S. manufacturer for over a century.

Since its founding in 1903, Telescope & the Vanderminden Family have relied on hardworking Americans to make the company successful. The workforce is the true backbone of the company and many current employees have been with the company for over 40 years.

The family members at Telescope understand and are humbled by the awesome responsibility of the heritage that Telescope represents. All employees and customers alike are considered part of our extended family making this company stronger than ever.



1903 WORKFORCE



1921 CONSTRUCTION IN GRANVILLE, NY



1975 COMPANY PICNIC



2002 WORKFORCE



AERIAL IMAGE OF OUR FACTORY & OFFICES



RECENT 3X AWARD WINNER



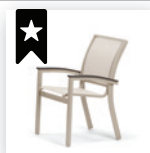
THE TELESCOPE FAMILY - 2020



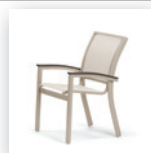
AMERICAN MADE, AMERICAN SOURCED



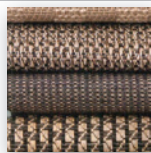
# Table of Contents



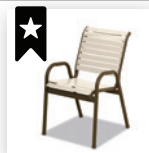
**SLING FEATURES & BENEFITS 2-3**



**SLING COLLECTIONS 4-15**



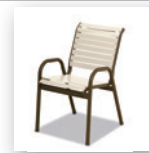
**SLING & PADDED SLING FABRIC SELECTION 16-20**



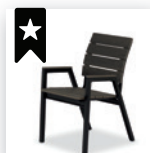
**STRAP FEATURES & BENEFITS 22**



**STRAP COLOR SELECTION 22**



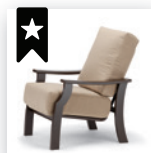
**STRAP COLLECTION 23**



**POLYMER/ALUMINUM FEATURES & BENEFITS 24-25**



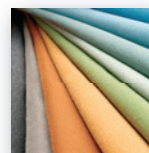
**POLYMER/ALUMINUM COLLECTIONS 26-30**



**CUSHION FEATURES & BENEFITS 31-32**



**CUSHION COLLECTIONS 33-39**



**CUSHION FABRIC SELECTION 40**



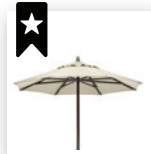
**PATIO HEATER 42-43**



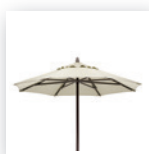
**FIRE TABLES 44-46**



**TRASH/TOWEL RECEPTACLE 46**



**UMBRELLA FEATURES & BENEFITS 47**



**UMBRELLAS & BASES 48-50**



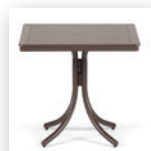
**FURNITURE ACCESSORIES 50**



**OBSOLETE ACRYLIC TABLE 51**



**VALUE HAMMERED MGP TOP TABLES 51**



**MGP TOP TABLES 52-54**



**RUSTIC POLYMER TOP TABLES 55-57**



**ORIGINS TOP TABLES 57-58**



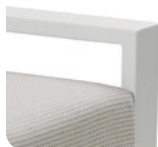
**MAINTENANCE, WARRANTY & SERVICE 60-61**

## HIGH PERFORMANCE 2604 POWDERCOAT FINISHES

### WHAT IS AAMA 2604?



- OUR SUPER DURABLE POWDERCOAT FINISHES MEET AND EXCEED THE STRICT PERFORMANCE REQUIREMENTS OF THE AAMA 2604 SPECIFICATION.
- THE CRITERIA & RIGOROUS TESTING REQUIREMENTS ARE ESTABLISHED BY THE FGIA (FENESTRATION & GLASS INDUSTRY ALLIANCE), FORMERLY KNOWN AS THE AMERICAN ARCHITECTURAL MANUFACTURERS ASSOCIATION (AAMA).
- AT LEAST 5X THE WEATHERING PERFORMANCE OF A STANDARD POLYESTER POWDERCOAT.
- OUR POWDERCOAT FINISHES WERE REQUIRED TO PASS OVER 20 AAMA 2604 CERTIFICATION TESTS, BELOW IS A LIST OF KEY AAMA STANDARDS AND TESTS:



HUMIDITY RESISTANCE  
SALT SPRAY RESISTANCE  
FLORIDA EXPOSURE  
COLOR RETENTION

3000 HOURS  
3000 HOURS  
5 YEARS  
DELTA E <5

## POLYMER YOU CAN CLEAN!

OUR MGP IS CLEANABLE UNLIKE THE OTHERS!

### OUR RESIN

SOLID RESIN 0% POROSITY

- CLEANABLE
- NONPOROUS SOLID RESIN
- CONSISTENT SURFACE FINISH
- WILL NOT ABSORB WATER
- RESISTANT TO MOST CHEMICALS
- WILL NOT CRACK, SEPARATE OR FADE IN ANY OUTDOOR ENVIRONMENT
- PRESENTS NO FIRE HAZARD
- MADE FROM ONLY FDA APPROVED RESINS



### THEIR RESIN

COMPETITORS FOAMED RESIN



- POROUS FOAMED RESIN
- TRAPS OIL AND DIRT PARTICLES
- FOAMING ADDS AREAS WHERE MILDEW AND DIRT CAN PENETRATE THE SURFACE
- DIFFICULT TO FULLY CLEAN

**TELESCOPE CASUAL FURNITURE** knows that designers work tirelessly on their efforts to create the best outdoor furniture experience for their customers, to remain relevant and to answer the demands of the growing category. Telescope has a proud tradition of creating new and original designs that have shaped the industry over our 120 years in business. We will continue to make every effort to protect our intellectual property rights, including the patents listed below and many other patents pending. In doing so, this helps us to continue to produce the great, Made-in-USA furniture you have come to know and love.

### PATENT PROTECTION

7,363,930 / D-596,892 / 8,230,869 / 8,302,616 / D-704,463 / D-711,661 / D-714,564 / D-716,069 / D-734,047 / D-749,335 / D-778,633 / 10,609,994 / 10,603,813 / D-876,855 / D-893,206 / D-910,357 / D-876,811 / 10,973,329 / 11,266,246 / D-927,216 and additional patents pending.



# FEATURES & BENEFITS SLING

SLING COLLECTIONS ON PP. 2-21

## MARINE GRADE POLYMER



### Standard MGP Frame Finish Selection



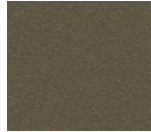
P50 Snow



PY0 Warm Grey



P60 Desert



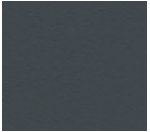
P40 Beachwood



P10 Kona



PF0 Storm



P30 Classic Graphite



P70 Black

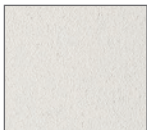
## POWDERCOATED ALUMINUM



### Textured Powdercoat Frame Color Options



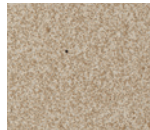
White



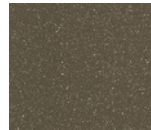
Snow



Warm Grey



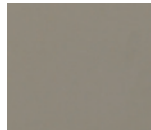
Desert



Beachwood



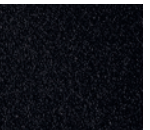
Kona



Storm



Graphite



Black



# SLING PRODUCTS BY STYLE

\* notates item is chat height or lower

## DINING ARM CHAIRS



9A70 \* Adirondack    9410 Leeward    9530 Leeward    6W70\* Wexler w/ MGP Arm    X070 \* Wexler w/ Rustic Arm    HH70 St. Catherine w/ MGP Arm



H070 St. Catherine w/ Rustic Arm    HH30 St. Catherine w/ MGP Arm    H030 St. Catherine w/ Rustic Arm    L070 Belle Isle    L010 Belle Isle    L040 Belle Isle



9K40 \* Kendall    1T70 Tribeca    7A70 Aruba    7A00 Aruba    7670 Gardenella    7610 \* Gardenella

## CAFE/BISTRO CHAIRS



9500 Leeward/Dune    9L10 Leeward/Dune    Z010 Bazza    Z050 Bazza    9K10 Kendall    9K50 Kendall/Bazza



7A10 Aruba    5A10 Aruba    8L70 Gardenella    8L60 Gardenella

## SUPREME ROCKERS



9550 Leeward    6W30\* Wexler w/ MGP Arm    X030 Wexler w/ Rustic Arm

## TWO & THREE SEATERS



6W40\*Wexler w/ MGP Arm    X040\*Wexler w/ Rustic Arm



6W50\*Wexler w/ MGP Arm    X050\*Wexler w/ Rustic Arm



L090 Belle Isle

## BALCONY & BAR CHAIRS



Leeward 9580 Balcony 9590 Bar    Bazza Z080 Balcony Z090 Bar    Belle Isle L0A0 Balcony L0B0 Bar    Kendall 9K80 Balcony 9K90 Bar    Aruba 7A80 Balcony 7A90 Bar    Aruba 7A30 Balcony 7A40 Bar    Aruba 5A30 Balcony 5A40 Bar    Gardenella 8L80 Balcony 8L90 Bar

## OTTOMANS



L000 Belle Isle    9A00 Adirondack

## CHAISES



9L20 Leeward    9400 Leeward    9N30 Dune    9N80 Dune    HH20 St. Catherine w/ MGP Arm    H020 St. Catherine w/ Rustic Arm    Z0S0 Bazza    L020 Belle Isle



9K30 Kendall    9100 Kendall    5A20 Aruba    5790 Aruba    7L30 Gardenella    7720 Gardenella    8080 Gardenella    70C0 Helios



# Leeward MGP Sling

Marine Grade Polymer (MGP) / Aluminum Frame • Stainless Hardware • Available in Sling • Available in Acrylic & Mesh Padded Sling  
• Available in Sunbrella® Rain & Sunbrella® Stock Book Program



THE RISE AT NORTHGATE  
COLLEGE STATION, TX



5YR

**9410**  
Arm Chair  
29"Wx38.5"Hx28.5"D  
Item Weight: 24lbs



5YR

**9500**  
Stacking Café Chair  
28.5"Wx34"Hx26"D  
Item Weight: 17lbs



5YR

**9L10**  
Stacking Armless Side  
Chair  
21.5"Wx33.75"Hx23.5"D  
Item Weight: 16lbs



5YR

**9530**  
Supreme Arm Chair  
29"Wx44.25"Hx28.5"D  
Item Weight: 26lbs



5YR

**9550**  
Supreme Rocker  
29"Wx44"Hx31"D  
Item Weight: 29lbs



5YR

**9580**  
Balcony Height Swivel  
Arm Chair  
28"Wx45"Hx26.5"D  
Item Weight: 27lbs



5YR

**9590**  
Bar Height Swivel  
Arm Chair  
28"Wx49"Hx26.5"D  
Item Weight: 29lbs



5YR

**9400**  
Stacking Armless Lay  
Flat Chaise w/ Wheels  
28"Wx41.5"Hx66"D  
Reclined Length = 78"  
Item Weight: 34lbs



5YR

**9L20**  
Stacking Armless Long  
Frame Lay Flat Chaise  
w/ Wheels  
28.5"Wx43.75"Hx72"D  
Reclined Length = 78"  
Item Weight: 45lbs

## Additional Features & Benefits Leeward MGP Sling

- Cafe Chair, Armless Side Chair, Armless Chaise and Armless Long Frame Lay Flat Chaise are all stackable items for easy storage!
- Stacking Armless Long Frame Lay Flat Chaise features an 18" seating height for easy in and out.
- 9400 & 9L20 Chaises feature integrated wheels in back legs.
- Coordinating cushion collection featured on p.33.
- Add-on items: PCMS Universal Chaise Pad and HDPL Attachable Pillow available, see p.50 for details.





# Dune MGP Sling

Marine Grade Polymer (MGP) / Aluminum Frame • Stainless Hardware • Available in Sling • Available in Acrylic & Mesh Padded Sling  
• Available in Sunbrella® Rain & Sunbrella® Stock Book Program



VALLEY VIEW CASINO  
VALLEY CENTER, CA



5YR

**9L10**  
Stacking Armless Side Chair  
21.5"Wx33.75"Hx23.5"D  
Item Weight: 16 lbs



5YR

**9500**  
Stacking Cafe Chair  
28.5"Wx34"Hx26"D  
Item Weight: 17 lbs

## Additional Features & Benefits DUNE MGP Sling

- All Dune items are stackable for easy storage!
- **9N30 Stacking Armless Chaise** features a 14.5" seating height for easy in and out. This design features a unique integrated ratchet which minimizes pinch points. In the reclined position, the chaise remains comfortably contoured.
- **9N80 Stacking Hydro-Lounge™ Chaise** has a 16" seat height, perfect for usage on a pool ledge. The MGP frame is designed for both water and land use. The contour of this chaise is perfect for lounging in the pool.
- **9N30 Stacking Armless Chaise** features integrated wheels.
- Add-on items: **PCMS Universal Chaise Pad** and **HDPL Attachable Pillow** available, see p.50 for details.



5YR

**9N30**  
Stacking Armless Chaise w/ Wheels  
25.5"Wx40"Hx73.75"D  
Reclined Length = 79"  
Item Weight: 34lbs



5YR

**9N80**  
Stacking Hydro-Lounge™ Chaise  
25.5"Wx39.75"Hx53"D  
Item Weight: 35lbs



5YR = 5 Year Contract Warranty

3YR = 3 Year Contract Warranty



# Wexler Sling

Marine Grade Polymer (MGP) Frame • Choice of MGP or Rustic Polymer Arms • Stainless Hardware • Available in Sling • Available in Acrylic & Mesh Padded Sling • Available in Sunbrella® Rain & Sunbrella® Stock Book Program



**6W70**  
Chat Height Arm Chair  
w/ MGP Arms  
29.25"Wx33"Hx28"D  
Item Weight: 26 lbs

5YR



**X070**  
Chat Height Arm Chair  
w/ Rustic Polymer Arms  
29.25"Wx33"Hx28"D  
Item Weight: 26 lbs

5YR



**6W30**  
Chat Supreme Rocker  
w/ MGP Arms  
29.75"Wx40.5"Hx32.75"D  
Item Weight: 30 lbs

5YR



**X030**  
Chat Supreme Rocker  
w/ Rustic Polymer Arms  
29.75"Wx40.5"Hx32.75"D  
Item Weight: 30 lbs

5YR



**6W40**  
Chat Height Two-Seat Loveseat  
w/ MGP Arms  
50.75"Wx33"Hx28"D  
Item Weight: 35 lbs

5YR



**X040**  
Chat Height Two-Seat Loveseat  
w/ Rustic Polymer Arms  
50.75"Wx33"Hx28"D  
Item Weight: 35 lbs

5YR



**6W50**  
Chat Height Three-Seat  
Sofa w/ MGP Arms  
72.25"Wx33"Hx30"D  
Item Weight: 45 lbs

5YR



**X050**  
Chat Height Three-Seat Sofa  
w/ Rustic Polymer Arms  
72.25"Wx33"Hx30"D  
Item Weight: 45 lbs

5YR

Table Top  
Available in  
MGP & Rustic  
Polymer



**5W80**  
End Table  
23"Wx19.75"Hx23"D  
Item Weight: 12 lbs

3YR

Table Top  
Available in  
MGP & Rustic  
Polymer



**5W90**  
Coffee Table  
42"Wx19.75"Hx24"D  
Item Weight: 21 lbs

3YR

## Additional Features & Benefits Wexler Sling

- Full MGP Frame construction with stainless steel hardware allows this collection to withstand any elements.
- Now available with Rustic Polymer Arms.
- Chat Height design makes for casual dining and ultra comfort.
- Collection features its own mid-century modern style end and coffee tables.
- **6W30/X030 Chat Supreme Rocker** features a higher back designed at the perfect height for resting your head.
- Coordinating cushion collection featured on p 37.



# St. Catherine Sling

Marine Grade Polymer (MGP) Frame • Choice of MGP or Rustic Polymer Arms • Stainless Hardware • Available in Sling • Available in Acrylic & Mesh Padded Sling • Available in Sunbrella® Rain & Sunbrella® Stock Book Program



**NEW**  
FOR  
**2023**

**NOW AVAILABLE  
WITH RUSTIC  
POLYMER ARM  
ACCENTS!**



**SOAKY MOUNTAIN WATERPARK  
SEVIERVILLE, TN**

## Additional Features & Benefits St. Catherine MGP Sling

- **Arm Chair, Supreme Arm Chair and Four-Position Lay Flat Chaise** are all designed with perfectly curved arms for maximum comfort.
- **Four Position Lay Flat Chaise** is constructed at a 16" seating height for easy in and out and is 78.5" when laid flat.
- Now available with Rustic Polymer Arms.
- Coordinating cushion collection featured on p.34.
- Add-on items: **PCMS Universal Chaise Pad** and **HDPL Attachable Pillow** available, see p.50 for details.



**NEW  
2023**



**HH70**  
Arm Chair w/ MGP Arm  
26"Wx38"Hx29.75"D  
Item Weight: 16lbs

**5YR**

**NEW  
2023**



**H070**  
Arm Chair w/ Rustic Polymer Arm  
26"Wx38"Hx29.75"D  
Item Weight: 16lbs

**5YR**

**NEW  
2023**



**HH30**  
Supreme Arm Chair  
w/ MGP Arm  
26"Wx43.5"Hx29"D  
Item Weight: 16lbs

**5YR**

**NEW  
2023**



**H030**  
Supreme Arm Chair w/  
Rustic Polymer Arm  
26"Wx43.5"Hx29"D  
Item Weight: 16lbs

**5YR**

**NEW  
2023**



**HH20**  
Four-Position Lay Flat Chaise  
w/ MGP Arm  
29"Wx43"Hx63.5"D  
Reclined Length = 78.5"  
Item Weight: 23lbs

**5YR**

**NEW  
2023**



**H020**  
Four-Position Lay Flat Chaise  
w/ Rustic Polymer Arm  
29"Wx43"Hx63.5"D  
Reclined Length = 78.5"  
Item Weight: 23lbs

**5YR**

**5YR = 5 Year Contract Warranty**

**3YR = 3 Year Contract Warranty**



# Bazza Sling

Powder Coat Aluminum Frame • Choice of Marine Grade Polymer (MGP) or Rustic Polymer Arm Accents • Stainless Hardware • Available in Sling  
• Available in Acrylic & Mesh Padded Sling • Available in Sunbrella® Rain & Sunbrella® Stock Book Program



**KIVA DUNES GOLF CLUB  
GULF SHORES, AL**



**Z010**  
Stacking Café Chair  
w/ Polymer Arms  
26.5"Wx35.5"Hx25"D  
Item Weight: 10lbs

**5YR**

**NEW  
2023**



**9K50**  
Stacking Armless Café Chair  
21.5"Wx35.5"Hx25.75"D  
Item Weight: 11lbs

**5YR**



**Z050**  
Bistro Stacking Chair  
w/ Polymer Arms  
21"Wx34"Hx26"D  
Item Weight: 9lbs

**5YR**



**Z080**  
Stacking Balcony Height Café  
Chair w/ Polymer Arms  
26.5"Wx43.5"Hx26.5"D  
Item Weight: 14.5lbs

**5YR**



**Z090**  
Stacking Bar Height Café Chair  
w/ Polymer Arms  
26.5"Wx47.5"Hx26.5"D  
Item Weight: 17lbs

**5YR**



**Z050**  
Contour Armless Chaise w/  
Polymer Overlay  
30"Wx42.75"Hx86"D  
Reclined Length = 86"  
Item Weight: 43lbs

**5YR**



**5YR**

**Z0C0**  
Add-on Chaise Connector Kit  
(set of 2)  
\*Sample shown below



**5YR**

**Z0T0**  
Add-on 26.5" x 10.25"  
Chaise Table Connector  
Kit  
Note: Z0T0 Chaise Table  
Connector includes a stem  
to secure an umbrella. #13  
Base (see p.50) could be  
added for additional stability.

## Additional Features & Benefits Bazza Sling

- **Bistro Stacking Chair and Stacking Armless Café Chair** are the perfect size to maximize the number of chairs around a table.
- **Contour Armless Chaise** has a 16" seating height for easy in and out. The chaise remains comfortably contoured in the reclined positions. Chaise features integrated hidden wheels for easy movement.
- **Add-on Chaise Connector Kits** easily connect multiple chaises to create a double, triple or quadruple chaise arrangement.
- Polymer Arms are available in 8 Standard MGP, 4 Accent MGP and 4 Rustic Polymer Colors.
- Coordinating Bench Collection on p.28.



# Belle Isle Sling

Powder Coat Aluminum Frame • Choice of Marine Grade Polymer (MGP) or Rustic Polymer Arm Accents  
 • Available in Sling • Available in Acrylic & Mesh Padded Sling • Available in Sunbrella® Rain & Sunbrella® Stock Book Program



SERENOA CLUBHOUSE  
CLEMENT, FL



**L070**  
Arm Chair  
27.5"Wx39"Hx28.5"D  
Item Weight: 12.5 lbs



**L010**  
Supreme Arm Chair  
27.5"Wx44"Hx28.5"D  
Item Weight: 14 lbs



**L040**  
Arm Chair with Multi-Position Back  
28.5"Wx39"Hx30"D  
Reclined Length: 46.5"  
Item Weight: 17 lbs

## Additional Features & Benefits Belle Isle Sling

- All items except for the **Ottoman** feature a curved Polymer arm which adds not only style but is comfortable to the touch in any climate. The Powder-coated Aluminum Frame and the Polymer arms can be color matched or two-toned to suit your needs.
- **Arm Chair with Multi-Position Back** is perfect for both dining and relaxing! Use with the ottoman to make a two piece chaise for tighter spaces.
- **Four Position Lay Flat Chaise** features a seating height of 14" for easy in and out. The chaise has four easy-to-adjust positions and is 78.5" when laid flat.
- Polymer Arms are available in 8 Standard MGP, 4 Accent MGP and 4 Rustic Polymer Colors.
- Coordinating cushion collection on p.39.
- Add-on items: **PCMS Universal Chaise Pad** and **HDPL Attachable Pillow** available, see p.50 for details.



NEW  
2023



**L0A0**  
Balcony Height Swivel  
Arm Chair  
27"Wx43.5"Hx30"D  
Item Weight: 23 lbs



NEW  
2023



**L0B0**  
Bar Height Swivel Arm  
Chair  
27"Wx47"Hx30"D  
Item Weight: 25 lbs



NEW  
2023



**L090**  
Three Seat Sofa  
71"Wx38.75"Hx29"D  
Item Weight: 35 lbs



**L020**  
Four Position Lay Flat Chaise  
31"Wx39"Hx65.5"D  
Reclined Length = 78.5"  
Item Weight: 21 lbs



**L000**  
Ottoman  
26"Wx16"Hx19"D  
Item Weight: 6 lbs



5YR = 5 Year Contract Warranty

3YR = 3 Year Contract Warranty



# Kendall Sling

Powder Coat Aluminum Frame • Available in Sling • Available in Acrylic & Mesh Padded Sling  
• Available in Sunbrella® Rain & Sunbrella® Stock Book Program



SOAKY MOUNTAIN WATERPARK  
SEVIERVILLE, TN



**9K10**  
Stacking Café Chair  
25.5"Wx35.5"Hx25"D  
Item Weight: 9 lbs

NEW  
2023



**9K50**  
Stacking Armless Café Chair  
21.5"Wx35.5"Hx25.75"D  
Item Weight: 11 lbs



**9K40**  
Stacking Chat Chair  
25"Wx38"Hx31.25"D  
Item Weight: 12 lbs



**9K80**  
Stacking Balcony Height  
Café Chair  
25.5"Wx43.5"Hx26.5"D  
Item Weight: 14 lbs



**9K90**  
Stacking Bar Height Café Chair  
25.5"Wx47.5"Hx26.5"D  
Item Weight: 17 lbs



**9100**  
Stacking Armless Lay  
Flat Chaise  
25.75"Wx41"Hx66.75"D  
Reclined Length = 78.25"  
Item Weight: 21 lbs



**9K30**  
Lay-flat Stacking High Bed  
Armless 18" Chaise  
28"Wx43.75"Hx82"D  
Reclined Length = 82"  
Item Weight: 25 lbs

## Additional Features & Benefits Kendall Sling

- All Kendall items are stackable for easy/convenient storage!
- This contemporary design features an extra-durable aluminum frame with replaceable plastic glides to protect patio surface.
- **Stacking Chat Chair** provides chaise comfort while saving valuable space.
- **Stacking Armless Cafe Chair** is the perfect size to maximize the number of chairs around a table.
- **Stacking Armless Lay Flat Chaise** features a 15" seating height for easy in and out. This chaise features a unique integrated reclining mechanism for a sleek contemporary appeal and to minimize pinch points.
- Add-on items: **PCMS Universal Chaise Pad** and **HDPL Attachable Pillow** available, see p.50 for details.





# Tribeca Sling

Powder Coat Aluminum Frame • Available in Standard Sling only



SEATTLE, WA



5YR

**1T70**  
Stacking Café Chair  
24"Wx34"Hx24.5"D  
Item Weight: 11 lbs

## Additional Features & Benefits Tribeca Sling

- Stacking Café Chairs are densely stackable for easy/convenient storage!
- The unique wrapped sling provides a more upholstered look than traditional sling.
- Sharp contemporary lines are perfect for today's aesthetic.
- The small scale of this item is at home in any commercial setting.

5YR = 5 Year Contract Warranty

3YR = 3 Year Contract Warranty



# Aruba Sling

Powder Coat Aluminum Frame • Available in Sling • Available in Acrylic & Mesh Padded Sling  
• Available in Sunbrella® Rain & Sunbrella® Stock Book Program

## Additional Features & Benefits Aruba Sling

- Many items stack for convenient storage.
- This collection celebrates 20 years of longevity, quality & value.
- The broad depth of this collection allows for a variety of seating applications that will coordinate beautifully.
- **Four Position High Bed Lay Flat Arm Chaise** features a seating height of 18" for easy in and out.
- Add-on items: **PCMS Universal Chaise Pad** and **HDPL Attachable Pillow** available, see p.50 for details.



**H2OBX WATERPARK  
POWELLS POINT, NC**



**7A70**  
Stacking Arm Chair  
25"Wx34.75"Hx28.5"D  
Item Weight: 8 lbs

**5YR**



**7A00**  
Supreme Stacking Arm Chair  
25"Wx43.5"Hx29.25"D  
Item Weight: 10 lbs

**5YR**



**7A10**  
Stacking Café Chair  
23.5"Wx33.25"Hx26"D  
Item Weight: 7 lbs

**5YR**



**7A30**  
Balcony Height Stacking Café Chair  
23.5"Wx42"Hx29"D  
Item Weight: 12 lbs

**5YR**



**7A40**  
Bar Height Stacking Café Chair  
23.5"Wx46"Hx29"D  
Item Weight: 14 lbs

**5YR**



**7A80**  
Balcony Height Swivel Café Chair  
23.5"Wx41.5"Hx26"D  
Item Weight: 15 lbs

**5YR**



**7A90**  
Bar Height Swivel Café Chair  
23.5"Wx45.25"Hx26"D  
Item Weight: 16 lbs

**5YR**



**5A10**  
Dining Height Armless Café Chair  
17.5"Wx35.5"Hx25"D  
Item Weight: 7 lbs

**5YR**



**5A30**  
Balcony Height Armless Café Chair  
17.5"Wx43.5"Hx25.75"D  
Item Weight: 8 lbs

**5YR**



**5A40**  
Bar Height Armless Café Chair  
17.5"Wx47"Hx26.5"D  
Item Weight: 9 lbs

**5YR**



**5A20**  
Four-Position Lay Flat Stacking Armless Chaise  
28"Wx42.5"Hx66"D  
Reclined Length = 78.25"  
Item Weight: 18 lbs

**5YR**



**5790**  
Four-Position High Bed Lay Flat Stacking Arm Chaise  
27.75"Wx48"Hx65"D  
Reclined Length = 77.5"  
Item Weight: 18.5 lbs

**5YR**



# Gardenella Sling

Powder Coat Aluminum Frame • Available in Sling • Available in Acrylic & Mesh Padded Sling  
• Available in Sunbrella® Rain & Sunbrella® Stock Book Program



**H2OBX WATERPARK  
POWELLS POINT, NC**



**3YR**

**7670**  
Stacking Arm Chair  
24"Wx34"Hx28.5"D  
Item Weight: 7 lbs



**5YR**

**8L70**  
Stacking Café Chair  
22.5"Wx33"Hx25"D  
Item Weight: 8 lbs



**5YR**

**8L60**  
Stacking Bistro Chair  
21"Wx34.5"Hx25.75"D  
Item Weight: 7 lbs



**3YR**

**7610**  
Stacking Poolside Chair  
24"Wx30"Hx32.5"D  
Item Weight: 7 lbs



**5YR**

**8L80**  
Balcony Height Stacking  
Armless Café Chair  
21"Wx43"Hx28"D  
Item Weight: 6.75 lbs



**5YR**

**8L90**  
Bar Height Stacking  
Armless Café Chair  
21"Wx46"Hx28"D  
Item Weight: 7.75 lbs



**3YR**

**7720**  
Four-Position Stacking Chaise  
26.75"Wx46.75"Hx63"D  
Reclined Length = 75.5"  
Item Weight: 13 lbs



**3YR**

**8080**  
Four-Position Lay Flat Stacking  
Armless Chaise  
26.5"Wx42.5"Hx66"D  
Reclined Length = 77.5"  
Item Weight: 15.5 lbs



**5YR**

**7130**  
Four-Position Lay Flat Stacking  
Armless Chaise  
27"Wx43"Hx69"D  
Reclined Length = 78"  
Item Weight: 16 lbs

## Additional Features & Benefits Gardenella Sling

- Telescope first introduced the Gardenella Sling Collection in 1977. Over the last 46 years, we have learned that this simple yet wholesome collection is unstoppable. Reliance Sling has joined forces with our popular Gardenella Sling Collection. All former Reliance Sling items are now available in Gardenella Sling
- Every item in this collection is stackable for easy and convenient storage.
- **7130 Four-Position Lay-Flat Stacking Armless Chaise** features a 16" seating height for easy in and out. 78" when laid flat.
- Over 1 million units built means this collection has stood the test of time.
- Add-on items: **PCMS Universal Chaise Pad** and **HDPL Attachable Pillow** available, see p.50 for details.



**5YR** = 5 Year Contract Warranty

**3YR** = 3 Year Contract Warranty



# Helios Contract Sling

Powder Coat Aluminum Frame • Choice of Standard & Accent Marine Grade Polymer (MGP) or Rustic Polymer Arm Accents  
 • Available in Sling • Available in Acrylic & Mesh Padded Sling • Sunbrella® Rain & Sunbrella® Stock Book Program



5YR

**70C0**  
 Four Position Stacking Lay Flat Chaise  
 27.75"Wx43"Hx69"D  
 Reclined Length: 78"  
 Item Weight: 21 lbs



## Additional Features & Benefits Helios Sling

- Our contemporary Sling Chaise is available with your choice of 8 Standard MGP, 4 Accent MGP or 4 Rustic Polymer Arm Colors.
- **Four Position Stacking Lay Flat Chaise** stacks conveniently to maximize storage space.
- **PCMS Universal Chaise Pad** shown left and **HDPL Attachable Pillow** shown above are available as Add-on items. See p. 50 for details.



# Adirondack MGP Sling

Marine Grade Polymer (MGP) / Aluminum Frame • Stainless Hardware • Available in Sling • Available in Acrylic & Mesh Padded Sling  
• Available in Sunbrella® Rain & Sunbrella® Stock Book Program



Miami, FL



5YR

**9A70**  
Arm Chair  
30.75"Wx38.5"Hx29.5"D  
Item Weight: 24lbs

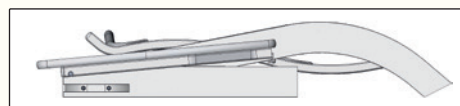


5YR

**9A00**  
Ottoman  
23"Wx14"Hx18"D  
Item Weight: 9 lbs

## Additional Features & Benefits Adirondack MGP Sling

- Wide polymer arms are comfortable to the touch on hot and cold days. This collection features hidden stainless steel hardware.
- Both chair and ottoman ship in flat UPS-able packaging, see image below.



5YR = 5 Year Contract Warranty

3YR = 3 Year Contract Warranty



# MESH PADDED SLING

FEATURING  
NEW FOR 2023  
Mesh Padded Sling

Sample images below: Gardenella 7670 Stacking Arm Chair



Sample images below: Gardenella 7720 Four-Position Stacking Chaise



Padded Sling is now available in Sling/Mesh fabric, See available sling fabrics on p.20.  
Front and back of sling are the same pattern.  
Sew across lines not only keep padding in all the right places, but add interest to the design

## DECODING ITEM NUMBERS: MESH SLING VS. MESH PADDED SLING

### MESH SLING



767Y-558-04

Chair  
Frame  
Style &  
Finish

Sling/Mesh  
Pat #

Pack Size

### MESH PADDED SLING



767W-558-P4

Chair  
Frame  
Style &  
Finish

Sling/Mesh  
Pat #

Pack Size

Designates  
Padded Sling



# ACRYLIC PADDED SLING

Sample images below: Gardenella 7670 Stacking Arm Chair



Sample images below: Gardenella 7720 Four-Position Stacking Chaise



Acrylic Padded Sling is constructed with a cushion fabric of your choosing, paired with a preselected coordinating sling fabric on the back. See pp. 18-19 for Acrylic Padded Sling Fabric Selection.

## DECODING ITEM NUMBERS: MESH SLING VS. ACRYLIC PADDED SLING

### MESH SLING



**767Y-558-04**

Chair  
Frame  
Style &  
Finish

Sling/Mesh  
Pat #

Pack Size

### ACRYLIC PADDED SLING



**767W-582-04**

Chair  
Frame  
Style &  
Finish

Acrylic  
Pat #

Pack Size



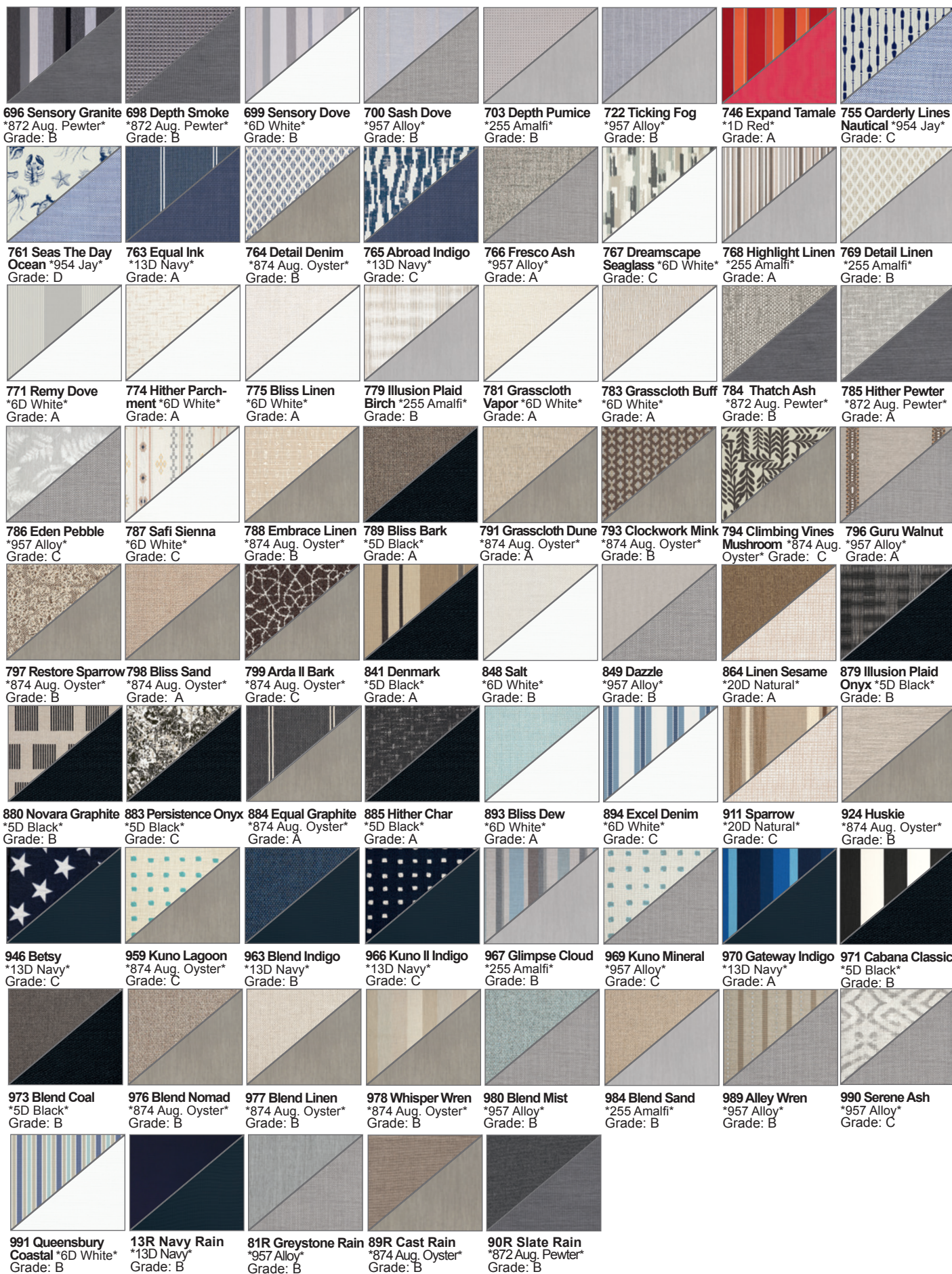
# ACRYLIC PADDED SLING FABRIC SELECTION

Our Acrylic Padded Sling is constructed with a cushion fabric of your choosing, paired with a preselected coordinating sling fabric on the back. **Bold** text notates the Cushion Pattern, Asterisk (\*) notates preselected coordinating sling fabric. To order: use **bold** cushion pattern number.



<b>17A Champagne</b> *874 Aug. Oyster* Grade: A	<b>22A Forest Green</b> *22D Forest Green* Grade: A	<b>24A Cast Breeze</b> *6D White* Grade: A	<b>27A True Blue</b> *70D Atlantis* Grade: A	<b>28A Pacific Blue</b> *28D Pacific Blue* Grade: A	<b>30A Cast Sable</b> *874 Aug. Oyster* Grade: A	<b>35A Cobalt</b> *35D Cobalt* Grade: A	<b>36A Stone Linen</b> *5D Black* Grade: B
<b>38A Lime</b> *38D Lime* Grade: A	<b>40A Cast Silver</b> *255 Amalfi* Grade: A	<b>41A Tangerine</b> *41D Tangerine* Grade: A	<b>42A Sky</b> *42D Sky* Grade: A	<b>43A Yellow</b> *43D Yellow* Grade: A	<b>44A Canvas Flax</b> *874 Aug. Oyster* Grade: A	<b>54A Stucco</b> *874 Aug. Oyster* Grade: A	<b>57A Aruba</b> *51D Aqua* Grade: A
<b>66A Azure</b> *42D Sky* Grade: A	<b>69A Mango</b> *41D Tangerine* Grade: A	<b>75A Wren</b> *20D Natural* Grade: A	<b>78A Mineral Blue</b> *6D White* Grade: A	<b>79A Peacock</b> *215 Aug. Oasis* Grade: A	<b>81A Greystone</b> *957 Alloy* Grade: A	<b>86A Indigo</b> *13D Navy* Grade: A	<b>89A Cast</b> *874 Aug. Oyster* Grade: A
<b>90A Slate</b> *872 Aug. Pewter* Grade: A	<b>91A Canvas Henna</b> *20D Natural* Grade: A	<b>92A Cast Ivy</b> *6D White* Grade: A	<b>93A Canvas Persimmon</b> *6D White* Grade: A	<b>95A Canvas Haze</b> *874 Aug. Oyster* Grade: A	<b>136 Blue White Stripe</b> *6D White* Grade: A	<b>443 Sand</b> *20D Natural* Grade: B	<b>454 Paris</b> *874 Aug. Oyster* Grade: B
<b>462 Sahara</b> *20D Natural* Grade: B	<b>495 Ross</b> *6D White* Grade: B	<b>581 Relate Ivy</b> *6D White* Grade: A	<b>582 Highlight Ivy</b> *874 Aug. Oyster* Grade: A	<b>583 Royal Meadow</b> *6D White* Grade: B	<b>584 Calm Laurel</b> *6D White* Grade: C	<b>587 Royal Guava</b> *874 Aug. Oyster* Grade: B	<b>588 Highlight Splendor</b> *874 Aug. Oyster* Grade: A
<b>589 Relate Persimmon</b> *6D White* Grade: A	<b>591 Hither Twilight</b> *13D Navy* Grade: A	<b>592 Climbing Vines</b> <b>Indigo</b> *13D Navy* Grade: C	<b>593 Relate Harbor</b> *6D White* Grade: A	<b>594 Restore Indigo</b> *13D Navy* Grade: B	<b>595 Ally Coastal</b> *6D White* Grade: C	<b>597 Grasscloth Cloud</b> *6D White* Grade: A	<b>598 Rise Indigo</b> *13D Navy* Grade: C
<b>602 Outlaw Dawn</b> *255 Amalfi* Grade: B	<b>649 Atlantic Blue</b> <b>Stripe</b> *35D Cobalt* Grade: A	<b>656 Copeland</b> <b>Chambray</b> *6D White* Grade: B	<b>658 Tabloid Cloud</b> *874 Aug. Oyster* Grade: B	<b>659 Lure Smoke</b> *872 Aug. Pewter* Grade: B	<b>661 Atmosphere</b> <b>Mineral</b> *6D White* Grade: B	<b>664 Charter Silk</b> *6D White* Grade: C	<b>667 Santara Mist</b> *6D White* Grade: B
<b>672 Proven Denim</b> *874 Aug. Oyster* Grade: B	<b>673 Capra II Smoke</b> *957 Alloy* Grade: C	<b>674 Sensory Lagoon</b> *874 Aug. Oyster* Grade: B	<b>676 Expand Calypso</b> *13D Navy* Grade: A	<b>678 Penelope</b> <b>Emerald</b> *6D White* Grade: D	<b>691 Striped Capra</b> <b>Granite</b> *874 Aug. Oyster* Grade: C	<b>693 Agra Classic</b> *5D Black* Grade: C	<b>694 Proven Ash</b> *957 Alloy* Grade: B

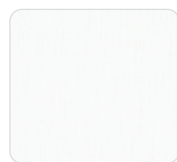






# SLING FABRIC SELECTION See our full line catalog for our complete fabric selection

Fabric for Sling Products Only... The fabrics below represent our most popular fabrics for Sling and Mesh Padded Sling (some exclusions) applications but we have 81 sling fabrics available in our full line catalog. For Acrylic Padded Sling fabric selection, see pp. 18-19.



6D White  
A Grade



262 Abalone  
B Grade



20D Natural  
A Grade



579 Chantilly  
B Grade ▲



231 Sand Dollar  
B Grade ▲



878 Smoke  
B Grade



877 Ella  
A Grade



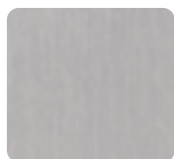
11S Bristol  
A Grade



563 Scotch  
B Grade ▲



558 Deacon  
A Grade



255 Amalfi  
A Grade



257 Jewel  
B Grade



489 Boulder  
B Grade



260 Fossil  
B Grade



316 Nickel  
B Grade ▲



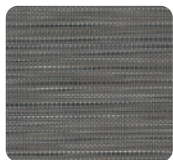
930 Titanium  
A Grade



564 Storm  
B Grade ▲



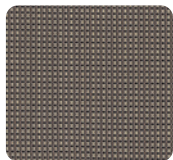
259 Sicily  
B Grade



466 James  
B Grade



574 Anchor  
B Grade



753 Tweed  
A Grade



476 Beacon  
A Grade



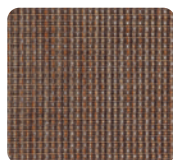
573 Mink  
B Grade ▲



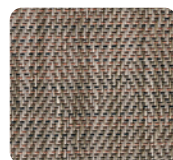
571 Kora  
A Grade



876 Georgia  
A Grade



575 Carob  
B Grade ▲



948 Harper  
A Grade



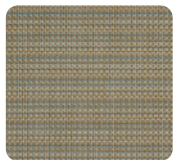
562 Gannon  
B Grade



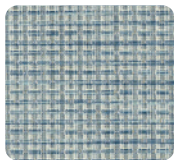
953 Kasler  
B Grade



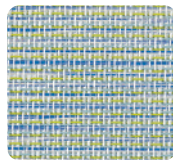
110 Bark  
A Grade



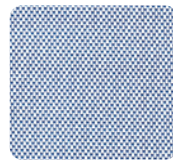
865 Skip  
B Grade ▲



561 Burke  
B Grade ▲



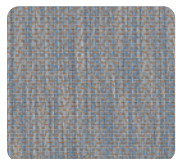
365 Baja  
A Grade



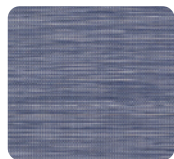
954 Jay  
A Grade



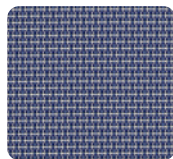
578 Charm  
A Grade



366 Reflection  
B Grade



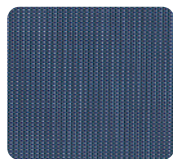
868 Brooks  
B Grade



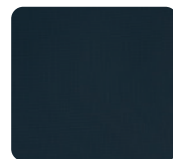
749 Breeze  
A Grade



214 River  
B Grade



950 Mavi  
A Grade



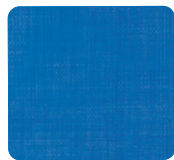
13D Navy  
A Grade



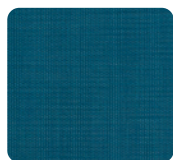
70D Atlantis  
A Grade



35D Cobalt  
A Grade



28D Pacific Blue  
A Grade



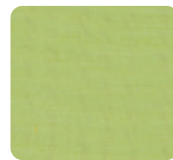
24D Teal  
A Grade



51D Aqua  
A Grade



42D Sky  
A Grade



38D Lime  
A Grade



22D Forest Green  
A Grade



43D Yellow  
A Grade



41D Tangerine  
A Grade



1D Red  
A Grade



5D Black  
A Grade

▲ Symbol denotes fabric not available on HDPL Attachable Pillow or Mesh Padded Sling



# RECENT INSTALLATIONS SLING & STRAP



**KARTRITE RESORT & INDOOR WATERPARK  
MONTCELLO, NY**



**SOAKY MOUNTAIN WATERPARK, SEVIERVILLE, TN**



**H2OBX WATERPARK  
POWELLS POINT, NC**



**KARTRITE RESORT & INDOOR WATERPARK  
MONTCELLO, NY**



**JAYHAWK CLUB  
LAWRENCE, KS**



**H2OBX WATERPARK  
POWELLS POINT, NC**



# FEATURES & BENEFITS STRAP

STRAP COLLECTIONS ON PP. 22-23

2" wide extruded vinyl straps made of 100% virgin vinyl and UV stabilizers for colorfastness.

Patented straps (US Patent #6,523,904) lock securely in specially designed channels.

14 Available strap colors, paired with 9 textured powdercoat frame finishes.


Durable replaceable plastic glides protect patio surface.

Resilient strapping won't permanently sag after long use.

Individual straps can be easily replaced if necessary.

Strong, durable construction.

Stainless Steel and aluminum hardware resists corrosion.



## Custom Strap Selection

The 2" Custom Strap colors listed below are available on our Reliance Contract Strap Collection. Note: There are no minimums on our custom strap program (other than our standard packs) but care must be taken when ordering to specify the desired straps and their arrangement on the chairs and chaises. Due to the custom nature of this product, there is a 50% deposit required on custom strap orders and a 30% Restocking Fee on any returned custom strap order.

								
White Pat# 066	Snow Pat# 057	Warm Grey Pat# 0YY	Desert Pat#0DD	Beachwood Pat# 0JJ	Kona Pat# 0KK	Storm Pat# 0FF	Graphite Pat# 0RR	Black Pat# 777
								
Pebble Pat# 001	Forest Green Pat# 042	Navy Pat# 0NN	Cobalt Pat# 035	Turquoise Pat# 028				

## Textured Powdercoat Frame Color Options

								
White	Snow	Warm Grey	Desert	Beachwood	Kona	Storm	Graphite	Black



# Reliance Contract Strap

Powder Coat Aluminum Frame • 2" Vinyl Welded Strap



THE KARTRITE RESORT & INDOOR WATERPARK  
MONTICELLO, NY



5YR

**8R60**  
Stacking Bistro Chair  
21"Wx34.5"Hx25.75"D  
Item Weight: 9 lbs



5YR

**7R30**  
Four-Position Lay Flat Stacking  
Armless Chaise  
27"Wx43"Hx69"D  
Reclined Length = 78"  
Item Weight: 21.25 lbs

## Additional Features & Benefits Reliance Strap

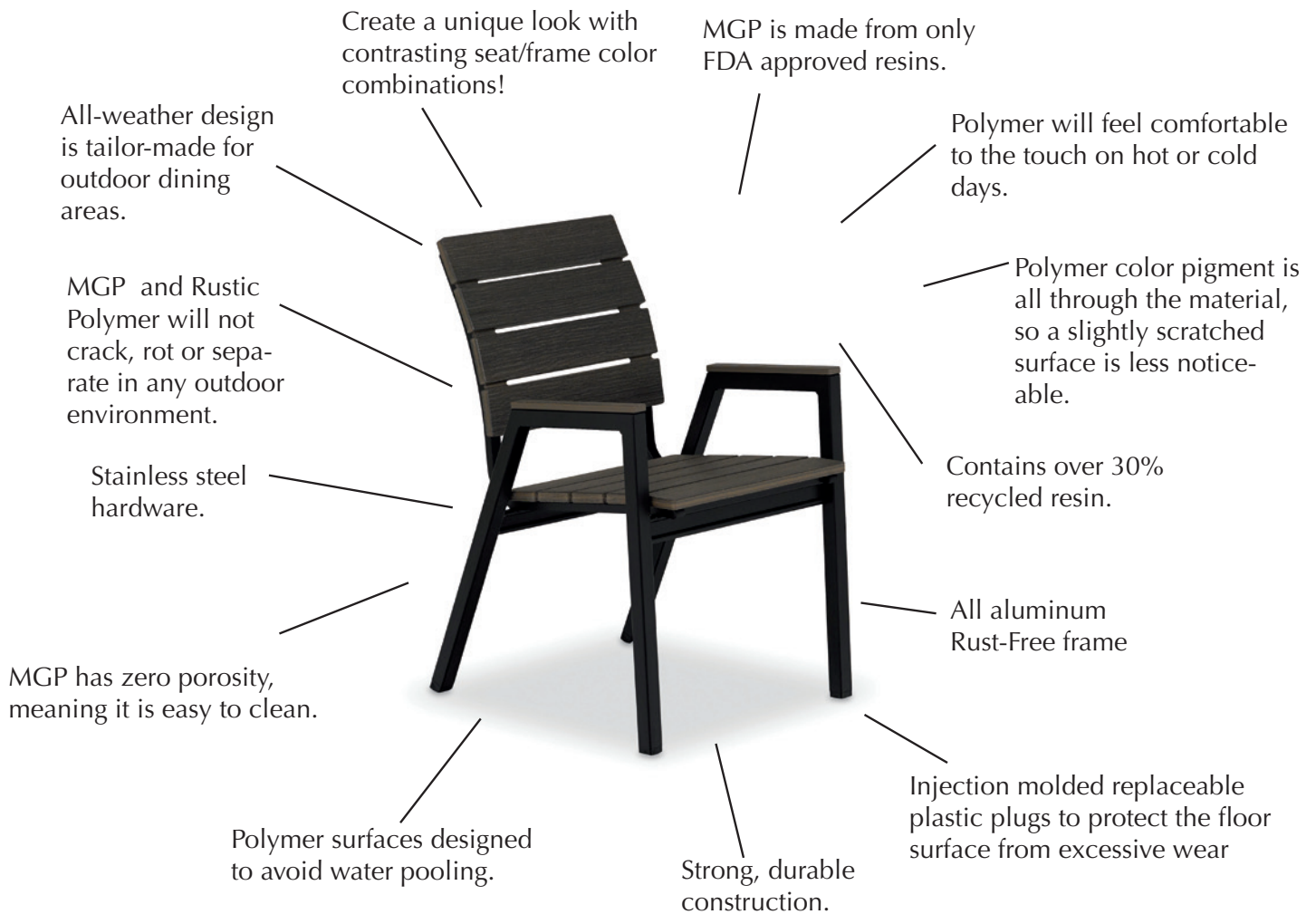
- All Reliance Strap items are stackable for easy/convenient storage!
- **7R30 Four-Position Lay-Flat Stacking Armless Chaise** features a 16" seating height for easy in and out. 78" when laid flat.
- Create a custom look by mixing and matching your strap colors!
- For a Coordinating Sling Collection, Please see the Gardenella Sling Collection featured on p.13.
- Add-on items: **PCMS Universal Chaise Pad** and **HDPL Attachable Pillow** available, see p.50 for details.





# FEATURES & BENEFITS POLYMER/ALUMINUM PRODUCTS

POLYMER/ALUMINUM COLLECTIONS ON PP. 24-30



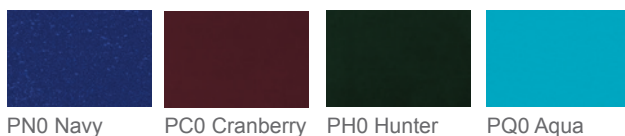
## Standard MGP Frame Finish Selection



## Textured Powdercoat Frame Color Options

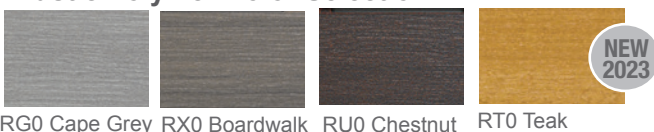


## Accent MGP Color Selection



The Accent MGP Colors are only available in the following collections: Bazza Bench and Sling, Avant, Newport, Belle Isle Cushion and Sling, Porch Swing, Plymouth Bay, Helios Sling, select MGP tables, select Fire tables and Patio Accessories.

## Rustic Polymer Color Selection



The Rustic Polymer Colors are only available in the following collections: St. Catherine Cushion & Sling, Wexler Cushion and Sling, Welles Cushion, Belle Isle Cushion & Sling, Porch Swing, Bazza Bench and Sling, Plymouth Bay, Avant, Newport, Helios Sling, Rustic Polymer Top tables, select Fire tables and Patio Accessories.



# POLYMER/ALUMINUM PRODUCTS BY STYLE

## CHAT CHAIR



1N30 Newport

## DINING ARM CHAIRS



8Z60 Bazza



1N70 Newport



1N60 Newport

## BALCONY HEIGHT ARMLESS CHAIRS



8930 Avant



8ZG0 Bazza



89C0 Avant

## BAR HEIGHT ARMLESS CHAIRS



8940 Avant



8ZF0 Bazza



89B0 Avant

## BENCHES & PICNIC TABLES



8Z40 Bazza



8Z70 Bazza



8Z80 Bazza



1P80 Plymouth Bay

## ARMLESS DINING CHAIRS



NC70 Nola



8900 Avant



89L0 Avant

## OTTOMAN



1N00 Newport

## BALCONY HEIGHT ARM CHAIRS



1NC0 Newport



1N80 Newport

## BAR HEIGHT ARM CHAIRS



1NB0 Newport



1N90 Newport



# Nola MGP

Powdercoated Aluminum Frame • Marine Grade Polymer (MGP) Seat/Back • Stainless Hardware



GLENS FALLS, NY



5YR

**NC70**  
Dining Chair  
21.5"Wx31.5"Hx21.75"D  
Item Weight: 15.25 lbs



3YR

Top Only  
• **T090...**42" Square Table Top Only  
(Slat top only)  
  
Tapered Legs Only  
• **NL50LEG...** Dining Height Legs only, 29"H

## Additional Features & Benefits Nola MGP

- Design inspired by the classic Windsor chair, the Nola Collection is the epitome of outdoor kitchen style.
- Combination of powdercoated frame and MGP seat/back guarantees this timeless design will withstand the outdoor elements in style.
- Complete the look by pairing the Nola Dining Chair with any of our various size & style tables available with matching leg style **NL50LEG**, see pp. 53-58.

NEW  
2023



3YR

**NL80**  
Round End Table  
23"Wx19.5"Hx23"D  
Item Weight: 14.5 lbs

NEW  
2023



3YR

**NL30**  
Oval Coffee Table  
42"Wx19.5"Hx24"D  
Item Weight: 26 lbs



# Avant

Powder Coat Aluminum Frame • Choice of Marine Grade Polymer seat/back with Horizontal Slots or Rustic Polymer seat/back with Vertical Slat Pattern



MGP Rustic  
5YR

**8900**  
Stacking Bistro Chair  
15.5"Wx32.75"Hx20.25"D  
Item Weight: 8 lbs



MGP Rustic  
5YR

**89L0**  
Stacking Dining Chair  
19"Wx34"Hx24"D  
Item Weight: 16 lbs



NEW 2023



MGP Rustic  
5YR

**8ZG0**  
Coordinating Bazza  
Balcony Height Stool  
17.5"Wx31"Hx17"D  
Item Weight: 13 lbs



MGP Rustic  
5YR

**8930**  
Balcony Height Stacking  
Armless Chair  
15.75"Wx40.5"Hx20.25"D  
Item Weight: 12 lbs



MGP Rustic  
5YR

**89C0**  
Balcony Height Armless  
Swivel Chair (360°)  
16.5"Wx40"Hx19.5"D  
Item Weight: 16 lbs



NEW 2023



MGP Rustic  
5YR

**8ZF0**  
Coordinating Bazza Bar  
Height Stool  
17.5"Wx35"Hx17"D  
Item Weight: 14 lbs

## Additional Features & Benefits Avant

- 8900, 89L0, 8930, 8940 chairs are stackable for easy and convenient storage! (See images to right)
- Available in 9 powdercoat frame finishes, 12 MGP colors and 4 Rustic Polymer Colors
- Efficiently sized frame with small footprint is perfect for restaurant applications where space is a premium.
- MGP Colors will have horizontal slot pattern, Rustic Polymer Colors will have a vertical slat pattern on all items, except for 8ZG0 and 8ZF0 stools.
- Frame is fully welded for extra durability.
- Horizontal slot design of MGP seat/back features through holes which work as an integrated handle.
- Features plastic bumpers on footrest
- Create a unique look with contrasting seat/back and frame colors.



MGP Rustic  
5YR

**8940**  
Bar Height Stacking  
Armless Chair  
16.75"Wx44.5"Hx20.25"D  
Item Weight: 14 lbs



MGP Rustic  
5YR

**89B0**  
Bar Height Armless  
Swivel Chair (360°)  
18"Wx44"Hx19.5"D  
Item Weight: 17 lbs

5YR = 5 Year Contract Warranty

3YR = 3 Year Contract Warranty



# Bazza Bench

Powder Coat Aluminum Frame • Choice of Marine Grade Polymer (MGP) or Rustic Polymer Surface • Stainless Hardware



MOUNTAINTOP INN  
CHITTENDEN, VT



MGP Rustic  
5YR

**8Z60**  
Stacking Bistro Chair  
21"Wx34"Hx24.5"D  
Item Weight: 19 lbs



MGP Rustic  
5YR

**8ZG0**  
Balcony Height Stool  
17.5"Wx31"Hx17"D  
Item Weight: 13 lbs



MGP Rustic  
5YR

**8ZF0**  
Bar Height Stool  
17.5"Wx35"Hx17"D  
Item Weight: 14 lbs



MGP Rustic  
5YR

**8Z40**  
Stacking 56" Armless Bench  
56"Wx35.75"Hx26"D  
Item Weight: 44 lbs



MGP Rustic  
5YR

**8Z70**  
54" Flat Bench  
54"Wx18"Hx17.5"D  
Item Weight: 25 lbs

## Additional Features & Benefits Bazza

- Select Bazza items stack for easy and convenient storage! (See picture below)
- All Bazza items are available in 9 powdercoated frame finishes, 12 MGP Seat/Back Colors and 4 Rustic Polymer Seat/Back Colors.
- Seat and back feature through holes for maximum comfort and aesthetic flare.
- The Polymer surface will remain comfortable to the touch on hot or cold days.
- Coordinating sling collection featured on p. 8.



MGP



Rustic

5YR

**8Z80**  
64" Flat Bench  
64"Wx18"Hx17.5"D  
Item Weight: 37 lbs



# Plymouth Bay

Powder Coat Aluminum Frame • Choice of Marine Grade Polymer (MGP) or Rustic Polymer Surface • Stainless Hardware



5YR

**1P80**  
Picnic Table  
64"Wx29"Hx66.25"D  
Item Weight: 120 lbs  
Seat Height: 18"

## Additional Features & Benefits Plymouth Bay

- Available in 9 powdercoated frame finishes, 12 MGP Colors and 4 Rustic Polymer Colors.
- Table features an umbrella hole.
- Seat is designed with through holes for maximum comfort and aesthetic flare.
- The Polymer surfaces will remain comfortable to the touch on hot or cold days.

5YR = 5 Year Contract Warranty

3YR = 3 Year Contract Warranty



# Newport

Powder Coat Aluminum Frame • Choice of MGP and Rustic Polymer Surface • Stainless Hardware



**DORSET FIELD CLUB  
DORSET, VT**



**5YR**

**1N30**  
Adirondack Chair  
30"Wx37.5"Hx32"D  
Item Weight: 31 lbs



**5YR**

**1N70**  
Dining Arm Chair  
28"Wx38"Hx28"D  
Item Weight: 27 lbs



**5YR**

**1N00**  
Ottoman  
20.75"Wx16"Hx18"D  
Item Weight: 12 lbs



**5YR**

**1NC0**  
Balcony Height Stationary  
Arm Chair  
28"Wx46.75"Hx28.25"D  
Item Weight: 32 lbs



**5YR**

**1NB0**  
Bar Height Stationary  
Arm Chair  
28"Wx50.75"Hx28.25"D  
Item Weight: 34 lbs



**5YR**

**1N80**  
Balcony Height Swivel  
Arm Chair  
28"Wx47"Hx28"D  
Item Weight: 38 lbs



**5YR**

**1N90**  
Bar Height Swivel  
Arm Chair  
28"Wx51"Hx28"D  
Item Weight: 39 lbs

## Additional Features & Benefits Newport

- Frame features durable aluminum construction with stainless steel hardware.
- All Newport items are available in 9 powdercoated frame finishes, 12 MGP Seat/Back Colors and 4 Rustic Polymer Seat/Back Colors.
- Color and wood grain go completely through the material so small scratches are less noticeable.
- Polymer surface will remain comfortable to the touch on hot or cold days.



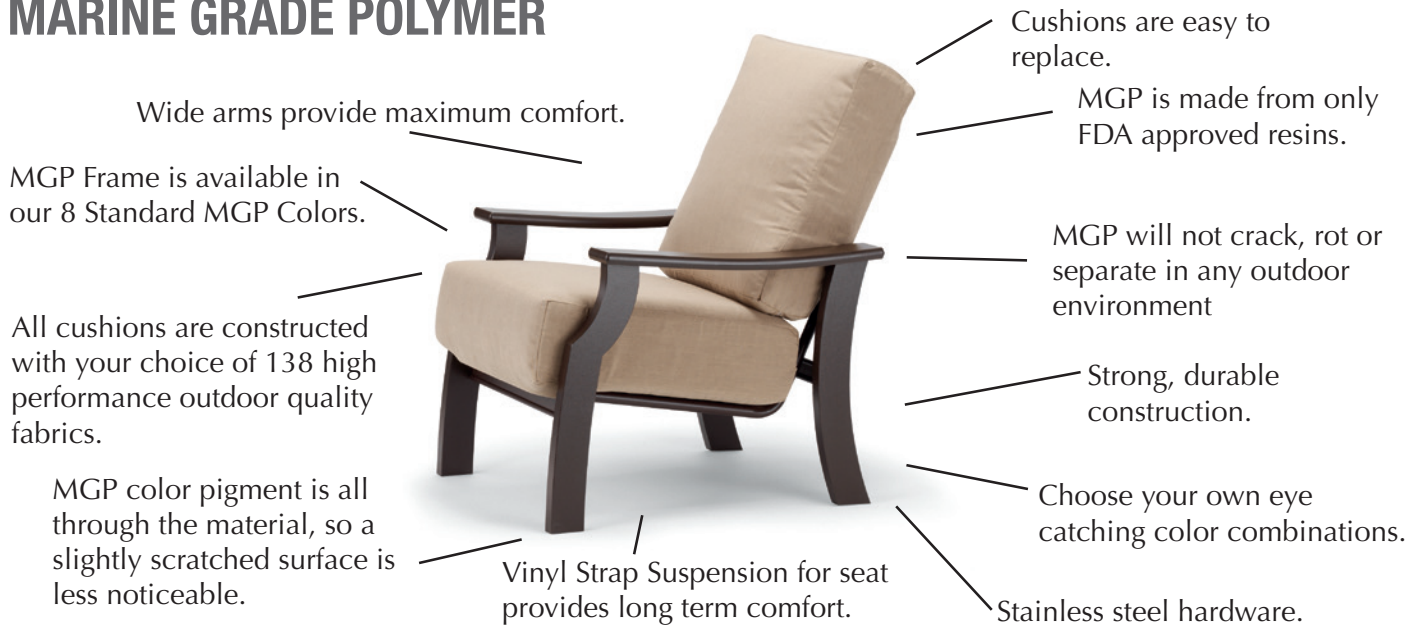
**LAKE MURRAY, SC**



# FEATURES & BENEFITS **Cushion**

CUSHION COLLECTIONS ON PP. 31-41

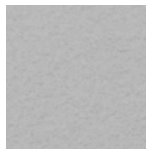
## MARINE GRADE POLYMER



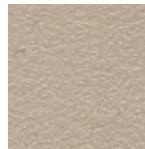
### STANDARD MGP FRAME FINISH SELECTION



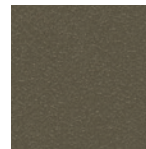
P50 Snow



PY0 Warm Grey



P60 Desert



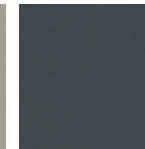
P40 Beachwood



P10 Kona



PF0 Storm



P30 Classic Graphite



P70 Black

## POWDERCOATED ALUMINUM



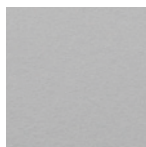
### TEXTURED POWDERCOAT FRAME COLOR OPTIONS



White



Snow



Warm Grey



Desert



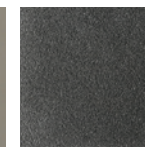
Beachwood



Kona



Storm



Graphite



Black

5YR = 5 Year Contract Warranty

3YR = 3 Year Contract Warranty



# CUSHION PRODUCTS BY STYLE

CUSHION COLLECTIONS ON PP. 32-41

## ARM CHAIR



8610 Leeward



KK70 St. Catherine  
w/ MGP Arm



K070 St. Catherine  
w/ Rustic Arm



1L70 Larssen



A070 Ashbee  
w/ Rope



AA70 Ashbee



5W70 Wexler  
w/ MGP Arm



R070 Wexler  
w/ Rustic Arm



W070 Welles



W010 Welles



B070 Belle Isle



B010 Belle Isle



B020 Belle Isle

## ROCKER



5W30 Wexler  
w/ MGP Arm



R030 Wexler  
w/ Rustic Arm

## TWO SEAT LOVESEAT



8640 Leeward



KK40 St. Catherine  
w/ MGP Arm



K040 St. Catherine  
w/ Rustic Arm



5W40 Wexler  
w/ MGP Arm



R040 Wexler  
w/ Rustic Arm



W040 Welles

## THREE SEAT SOFA



8650 Leeward



KK50 St. Catherine  
w/ MGP Arm



K050 St. Catherine  
w/ Rustic Arm



5W50 Wexler w/  
MGP Arm



R0R0 Wexler w/  
Rustic Arm



W050 Welles



B090 Belle Isle

## OTTOMAN



8500 Leeward/St. Catherine



AA00 Ashbee/Larssen



5W00 Wexler



W000 Welles



B000 Belle Isle

## SECTIONALS

### END SECTIONS



8550 Leeward



8540 Leeward



1LE0 Larssen



A050 Ashbee  
w/ Rope



AA50 Ashbee



B0R0 Belle Isle



B0L0 Belle Isle

### ARMLESS SECTIONS



8510 Leeward



AA10 Larssen/  
Ashbee



B0S0 Belle Isle

### CORNER SECTIONS



8560 Leeward



AA40 Larssen/  
Ashbee



ACC0 Larssen/  
Ashbee



AC00 Larssen/  
Ashbee



B0C0  
Belle Isle



# Leeward MGP Cushion

Marine Grade Polymer (MGP) Frame • Stainless Hardware • Available in Sunbrella® Rain & Sunbrella® Stock Book Program



SOAKY MOUNTAIN WATERPARK  
SEVIERVILLE, TN



3YR

**8610**  
Hidden Motion Arm Chair  
33"Wx39"Hx35"D  
Item Weight: 60 lbs



3YR

**8640**  
Hidden Motion Loveseat  
56.5"Wx39"Hx35"D  
Item Weight: 84 lbs



3YR

**8650**  
Three-Seat Sofa  
77.5"Wx39"Hx36"D  
Item Weight: 98 lbs



3YR

**8500**  
Ottoman  
22.75"Wx17"Hx21.75"D  
Item Weight: 17 lbs



3YR

**8540**  
Left Arm Two-Seat Hidden  
Motion Sectional  
52"Wx38.5"Hx34.5"D  
Item Weight: 74 lbs



3YR

**8550**  
Right Arm Two-Seat Hidden  
Motion Sectional  
52"Wx38.5"Hx34.5"D  
Item Weight: 74 lbs



3YR

**8510**  
Armless Single-Seat Fixed  
Sectional  
23.5"Wx38.5"Hx34.5"D  
Item Weight: 35 lbs



3YR

**8560**  
Corner Fixed Sectional  
34.5"Wx38.5"Hx34.5"D  
Item Weight: 48 lbs



3YR

**LCT0**  
Furniture Clip  
(Set of 2)  
Item Weight: .4 lbs



3YR

**1A90**  
MGP Top Coffee Table  
28.5"Wx13"Hx28.5"D  
Item Weight: 23 lbs



3YR

**1A30**  
MGP Top Corner Table  
28.5"Wx21.5"Hx28.5"D  
Item Weight: 43 lbs

## Additional Features & Benefits Leeward MGP Cushion

- Coordinates with our Leeward Sling Collection featured on p.4.
- Extra wide MGP arm provides extra comfort and is comfortable to the touch on hot and cold days.
- Vinyl strap suspension on seat and back provides long term comfort.
- Fabric panel over frame on back provides an upholstered look.
- Set of 2 LCT0 Furniture Clips included with each sectional piece.

5YR = 5 Year Contract Warranty

3YR = 3 Year Contract Warranty



# St. Catherine Cushion

Marine Grade Polymer (MGP) Frame • Choice of Marine Grade Polymer (MGP) or Rustic Polymer Arms • Stainless Hardware  
• Available in Sunbrella® Rain & Sunbrella® Stock Book Program

**NEW**  
FOR  
**2023**

**NOW AVAILABLE  
WITH RUSTIC  
POLYMER ARM  
ACCENTS!**



**H20BX WATERPARK  
POWELLS POINT, NC**



**NEW  
2023**



**3YR**

**KK70**  
Arm Chair w/ MGP Accents  
30"Wx36.25"Hx35.25"D  
Item Weight: 33.25 lbs

**NEW  
2023**



**3YR**

**K070**  
Arm Chair w/ Rustic Accents  
30"Wx36.25"Hx35.25"D  
Item Weight: 31.75 lbs

**NEW  
2023**



**3YR**

**KK40**  
Two-Seat Loveseat w/  
MGP Accents  
52"Wx36.25"Hx35.25"D  
Item Weight: 54.25 lbs

**NEW  
2023**



**3YR**

**K040**  
Two-Seat Loveseat w/  
Rustic Accents  
52"Wx36.25"Hx35.25"D  
Item Weight: 52.75 lbs

**NEW  
2023**



**3YR**

**KK50**  
Three-Seat Sofa w/  
MGP Accents  
74"Wx36.25"Hx35.25"D  
Item Weight: 67.25 lbs

**NEW  
2023**



**3YR**

**K050**  
Three-Seat Sofa w/  
Rustic Accents  
74"Wx36.25"Hx35.25"D  
Item Weight: 65.75 lbs



**3YR**

**8500**  
Ottoman  
22.75"Wx17"Hx21.75"D  
Item Weight: 17 lbs

## Additional Features & Benefits St. Catherine MGP Cushion

- Stationary ruggedly constructed items perfect for contract settings.
- Now available with Rustic Polymer Arms.
- Vinyl strap suspension on seat and back provides long term comfort.
- Fabric panel over frame on back provides an upholstered look.
- Coordinating Sling Collection featured on p.7.



# Larssen Cushion

Powdercoated Aluminum Frame • Available in Sunbrella® Rain & Sunbrella® Stock Book Program • Ready to Assemble



GLENS FALLS, NY



3YR

**1L70**  
Arm Chair  
30"Wx35.5"Hx33"D  
Item Weight: 22 lbs



3YR

**1LE0**  
End/Arm Section  
32"Wx33"Hx30"D  
Item Weight: 25 lbs



3YR

**AA10**  
Armless Single Seat  
Section  
28.5"Wx33"Hx30"D  
Item Weight: 21 lbs



3YR

**AA40**  
Square Corner Section  
30"Wx33"Hx30"D  
Item Weight: 25 lbs



3YR

**ACC0**  
Curved Corner Section  
30"Wx33"Hx30"D  
Item Weight: 22 lbs



3YR

**AC00**  
Curved Backless Corner  
Section  
28.5"Wx19"Hx28.5"D  
Item Weight: 14 lbs



3YR

**AA00**  
Ottoman  
28.5"Wx19"Hx28.5"D  
Item Weight: 16 lbs



3YR

**1A30**  
MGP Top Corner Table  
28.5"Wx21.5"Hx28.5"D  
Item Weight: 43 lbs



3YR

**1A90**  
MGP Top Coffee Table  
28.5"Wx13"Hx28.5"D  
Item Weight: 23 lbs



**ACT0**  
Sectional Furniture Clip  
\*Compatible with Larssen,  
Ashbee Rope and Ashbee  
Cushion Sectionals  
(set of 2 included with  
each item)

## Additional Features & Benefits Larssen Cushion

- Clean contemporary style perfect for today's modern resorts.
- Wide aluminum arm provides extra comfort.
- Vinyl strap suspension on seat and back provides long term comfort.
- Arm Chair features fabric panel over frame on back providing an upholstered look.
- Build a Two-seat Loveseat by combining (2) 1LE0 End Sections or create a Three-seat Sofa by adding in a AA10 Armless Section.

5YR = 5 Year Contract Warranty

3YR = 3 Year Contract Warranty



# Ashbee Cushion

Powder Coat Aluminum Frame • Available in Sunbrella® Rain & Sunbrella® Stock Book Program • Ready to Assemble



THE TIDES AT SOUTH TEMPE  
TEMPE, AZ



3YR

**AA70**  
Arm Chair  
31.5"Wx33"Hx30"D  
Item Weight: 27 lbs



3YR

**A070**  
Arm Chair w/ Rope  
31.5"Wx33"Hx30"D  
Item Weight: 27 lbs



3YR

**AA50**  
End/Arm Section  
30"Wx33"Hx30"D  
Item Weight: 24 lbs



3YR

**A050**  
End/Arm Section w/ Rope  
30"Wx33"Hx30"D  
Item Weight: 24 lbs



3YR

**AA10**  
Armless Single Seat Section  
28.5"Wx33"Hx30"D  
Item Weight: 21 lbs



3YR

**AA40**  
Square Corner Section  
30"Wx33"Hx30"D  
Item Weight: 25 lbs



3YR

**ACC0**  
Curved Corner Section  
30"Wx33"Hx30"D  
Item Weight: 22 lbs



3YR

**AC00**  
Curved Backless Corner Section  
28.5"Wx19"Hx28.5"D  
Item Weight: 14 lbs



3YR

**AA00**  
Ottoman  
28.5"Wx19"Hx28.5"D  
Item Weight: 16 lbs



3YR

**1A30**  
MGP Top Corner Table  
28.5"Wx21.5"Hx28.5"D  
Item Weight: 43 lbs



3YR

**1A90**  
MGP Top Coffee Table  
28.5"Wx13"Hx28.5"D  
Item Weight: 23 lbs



**ACT0**  
Sectional Furniture Clip  
\*Compatible with Larssen,  
Ashbee Rope and Ashbee  
Cushion Sectionals  
(set of 2 included with each  
item)

## Additional Features & Benefits Ashbee Cushion

- Clean contemporary style perfect for today's modern resorts.
- Modular design allows for endless design possibilities.
- The ottoman can be used freely or attached with our furniture clip.
- Vinyl strap suspension on seat provides long term comfort.



3YR

**A0R0**  
Arm Only w/ Rope  
Item Weight: 2 lbs



3YR

**1AA0**  
Arm Only  
Item Weight: 2 lbs



# Wexler Cushion

Marine Grade Polymer (MGP) Frame • Stainless Hardware • Choice of Marine Grade Polymer (MGP) or Rustic Polymer Arms  
• Available in Sunbrella® Rain & Sunbrella® Stock Book Program



 <p><b>5W70</b> Chat Height Arm Chair w/ MGP Arms 29.5"Wx38"Hx31"D Item Weight: 34 lbs</p>	 <p><b>R070</b> Chat Height Arm Chair w/ Rustic Polymer Arms 29.5"Wx38"Hx31"D Item Weight: 34 lbs</p>	 <p><b>5W30</b> Chat Height Rocker w/ MGP Arms 29.5"Wx35"Hx33"D Item Weight: 37 lbs</p>	 <p><b>R030</b> Chat Height Rocker w/ Rustic Polymer Arms 29.5"Wx35"Hx33"D Item Weight: 37 lbs</p>	 <p><b>5W40</b> Chat Height Two-Seat Loveseat w/ MGP Arms 51.5"Wx38"Hx31"D Item Weight: 48 lbs</p>	 <p><b>R040</b> Chat Height Two-Seat Loveseat w/ Rustic Polymer Arms 51.5"Wx38"Hx31"D Item Weight: 48 lbs</p>
 <p><b>5W50</b> Chat Height Three-Seat Sofa w/ MGP Arms 74.5"Wx38"Hx31"D Item Weight: 64 lbs</p>	 <p><b>R0R0</b> Chat Height Three-Seat Sofa w/ Rustic Polymer Arms 74.5"Wx38"Hx31"D Item Weight: 64 lbs</p>	 <p><b>5W00</b> Ottoman 25"Wx17.5"Hx23.5"D Item Weight: 15 lbs</p>	<p>Table Top Available in MGP &amp; Rustic Polymer</p>  <p><b>5W80</b> End Table 23"Wx19.75"Hx23"D Item Weight: 12 lbs</p>		<p>Table Top Available in MGP &amp; Rustic Polymer</p>  <p><b>5W90</b> Coffee Table 42"Wx19.75"Hx24"D Item Weight: 21 lbs</p>

## Additional Features & Benefits Wexler Cushion

- Stationary ruggedly constructed items perfect for contract settings.
- Vinyl strap suspension on seat and back provides long term comfort.
- Fabric panel over frame on back provides an upholstered look.
- Coordinating Sling Collection featured on p. 6.

5YR = 5 Year Contract Warranty

3YR = 3 Year Contract Warranty



# Welles Cushion

Powder Coat Aluminum Frame • Choice of Marine Grade Polymer (MGP) or Rustic Polymer Arms  
• Available in Sunbrella® Rain & Sunbrella® Stock Book Program



NEW  
2023



3YR

**W070**  
Arm Chair  
26"Wx38.25"Hx35.5"D  
Item Weight: 20 lbs

NEW  
2023



3YR

**W010**  
Cafe Dining Chair  
24.5"Wx38.25"Hx29"D  
Item Weight: 14 lbs

NEW  
2023



3YR

**W040**  
Two Seat Loveseat  
48"Wx38.25"Hx35.5"D  
Item Weight: 34 lbs

NEW  
2023



3YR

**W050**  
Three Seat Sofa  
70"Wx38.25"Hx35.5"D  
Item Weight: 54 lbs

NEW  
2023



3YR

**W000**  
Ottoman  
23.25"Wx18.5"Hx20.75"D  
Item Weight: 8 lbs

NEW  
2023



3YR

**NL80**  
Round End Table  
23"Wx19.5"Hx23"D  
Item Weight: 14.5 lbs

NEW  
2023



3YR

**NL30**  
Oval Coffee Table  
42"Wx19.5"Hx24"D  
Item Weight: 26 lbs

## Additional Features & Benefits Welles Cushion

- Polymer arm provides extra comfort and is comfortable to the touch on hot and cool days.
- Vinyl strap suspension on seat and back provides long term comfort.
- Fabric panel over frame on back provides an upholstered look.
- Arms and lower leg available in 8 Standard MGP Colors and 4 Rustic Polymer Colors.
- Welles Collection Legs in Rustic Polymer are milled down like natural wood and will have pattern variations, similar to real wood as shown to right.





# Belle Isle Cushion

Powder Coat Aluminum Frame • Choice of Marine Grade Polymer (MGP) or Rustic Polymer Arms  
• Available in Sunbrella® Rain & Sunbrella® Stock Book Program



LAKE MURRAY, SC



3YR

**B070**  
Arm Chair  
w/ Polymer Arms  
27.5"Wx38"Hx33"D  
Item Weight: 20 lbs



NEW  
2023



3YR

**B010**  
Supreme Arm Chair w/  
Polymer Arms  
27.5"Wx43"Hx35.75"D  
Item Weight: 22 lbs



3YR

**B020**  
Supreme Adjustable Back  
Chair w/ Polymer Arms  
28.25"Wx43"Hx34.5"D  
Reclined Length= 51.5"  
Item Weight: 25.5 lbs



3YR

**B090**  
Three-Seat Sofa w/  
Polymer Arms  
71.5"Wx38"Hx33"D  
Item Weight: 48 lbs



3YR

**B000**  
Ottoman  
25"Wx18"Hx19"D  
Item Weight: 8 lbs



3YR

**B0R0**  
Right Arm Two-Seat  
Section w/ Polymer  
Arm  
48"Wx37.5"Hx33"D  
Item Weight: 29 lbs



3YR

**B0L0**  
Left Arm Two-Seat  
Section w/ Polymer  
Arm  
48"Wx37.5"Hx33"D  
Item Weight: 29 lbs



3YR

**B0C0**  
Corner Section  
34.5"Wx37.5"Hx34.5"D  
Item Weight: 28 lbs



3YR

**B0S0**  
Armless Single-Seat  
Section  
22.5"Wx37.5"Hx33"D  
Item Weight: 14 lbs

## Additional Features & Benefits Belle Isle Cushion

- Coordinates with our Belle Isle Sling Collection featured on p.9.
- Wide polymer arm provides extra comfort and is comfortable to the touch on hot and cool days.
- Vinyl strap suspension on seat and back provides long term comfort.
- Fabric panel over frame on back provides an upholstered look.
- Supreme back heights add a level of sophistication to your design.
- **Adjustable Back Chair** can be used with the ottoman to make a two piece chaise for tighter spaces.

5YR = 5 Year Contract Warranty

3YR = 3 Year Contract Warranty



# CUSHION FABRIC SELECTION See our full line catalog for our complete fabric selection

Fabric for Cushion Products Only... The fabrics below represent our most popular fabrics for Cushion applications but we have 138 cushion fabrics available in our full line catalog.

						
6A White A Grade	597 Grasscloth Cloud A Grade	658 Tabloid Cloud B Grade	774 Hither Parchment A Grade	781 Grasscloth Vapor A Grade	848 Salt B Grade	775 Bliss Linen A Grade
						
977 Blend Linen B Grade	783 Grasscloth Buff A Grade	791 Grasscloth Dune A Grade	798 Bliss Sand A Grade	44A Canvas Flax A Grade	17A Champagne A Grade	443 Sand B Grade
						
54A Stucco A Grade	75A Wren A Grade	40A Cast Silver A Grade	984 Blend Sand B Grade	924 Huskie B Grade	976 Blend Nomad B Grade	462 Sahara B Grade
						
89A Cast A Grade	864 Linen Sesame A Grade	789 Bliss Bark A Grade	973 Blend Coal B Grade	36A Stone Linen B Grade	703 Depth Pumice B Grade	698 Depth Smoke B Grade
						
5A Black A Grade	885 Hither Char A Grade	90A Slate A Grade	659 Lure Smoke B Grade	694 Proven Ash B Grade	81A Greystone A Grade	785 Hither Pewter A Grade
						
849 Dazzle B Grade	661 Atmosphere Mineral B Grade	672 Proven Denim B Grade	963 Blend Indigo B Grade	86A Indigo A Grade	591 Hither Twilight A Grade	13A Navy A Grade
						
35A Cobalt A Grade	27A True Blue A Grade	66A Azure A Grade	28A Pacific Blue A Grade	95A Canvas Haze A Grade	42A Sky A Grade	78A Mineral Blue A Grade
						
57A Aruba A Grade	893 Bliss Dew A Grade	980 Blend Mist B Grade	24A Cast Breeze A Grade	79A Peacock A Grade	92A Cast Ivy A Grade	22A Forest Green A Grade
						
38A Lime A Grade	43A Yellow A Grade	41A Tangerine A Grade	69A Mango A Grade	93A Canvas Persimmon A Grade	91A Canvas Henna A Grade	1A Red A Grade
	<div>  <p><b>Sunbrella® RAIN</b> WATERPROOF PERFORMANCE FABRICS</p> <p>Sunbrella® Rain Fabrics available on all Cushion and all Padded Sling Collections. (some exclusions apply)</p> </div>					
30A Cast Sable A Grade						90R Rain Slate B Grade
						13R Rain Navy B Grade
						81R Rain Greystone B Grade
						89R Rain Cast B Grade



# RECENT INSTALLATIONS CUSHION



THREE NEEDS BREWING, BURLINGTON, VT



THE TIDES AT SOUTH TEMPE, TEMPE, AZ



THE RISE AT NORTHGATE, COLLEGE STATION, TX



SOAKY MOUNTAIN WATERPARK, SEVIERVILLE, TN



H20BX WATERPARK POWELLS POINT, NC



H20BX WATERPARK POWELLS POINT, NC



# Propane Patio Heater

Powder Coat Aluminum and Marine Grade Polymer Frame • Stainless Steel Heater



## Additional Features & Benefits Propane Patio Heater

- Electronic Ignition - 46,000 BTU
- Holds a common 20lb propane tank (not included).
- Match your Propane Patio Heater with your existing table and chairs!
- **7F50 Propane Patio Heater** can be used Free-standing or under any of our Dining, Balcony or Bar tables with 4-corner legs.
- Evenly distribute the heat to each guest around the table!
- **7F50 Propane Patio Heater** can hold up to (3) sets of add-on weights for free-standing applications.

## Available Add-on Items



**7F50**  
Propane Patio Heater  
32"Wx32"Dx90"H  
Weight: 55 lbs

**3YR**



**7F10**  
Add-on weights for  
Propane Patio Heater  
(set of 2)  
Combined Weight of 2=10 lbs

**3YR**



**7F00**  
Lower Estate Pole  
(for using Umbrella with  
Patio Heater)

**3YR**



**7FG0**  
Balcony Height Table Top  
Adapter for 7F50 Patio  
Heater

**3YR**



**7FH0**  
Bar Height Table Top Adapt-  
er for 7F50 Patio Heater

**3YR**

**NEW  
2023**

**NEW  
2023**

**NEW  
2023**



# 4 UNIQUE APPLICATIONS

## FREE-STANDING

The 7F50 Propane Patio Heater is designed as a Free-Standing item. For windy regions, up to 3 sets of Add-on weights can be installed for extra stability. See p. 42 for details.



7F10 Add-on Weights

7F50 Propane Patio Heater

## UNDER EXISTING TABLES

(Compatible on table designs with 4-corner legs)

The 7F50 Propane Patio Heater can be used under several of our Dining, Balcony and Bar Height Tables. The vertical pole was designed at the perfect diameter to be used in any table with a standard umbrella hole. The Patio Heater can be used under any Telescope table listed below.



+ Desired Table  
Top &  
Compatible  
Legs



=



7F50 Propane Patio Heater

### DINING HEIGHT LEGS

- 3850LEG
- NL50LEG
- 2M00LEG
- 5M00LEG
- 5ML0LEG
- 5290 42" x 120" Ext. Table

### BALCONY HEIGHT LEGS

- 38100LG
- 3M00LEG
- 6M00LEG
- 6ML0LEG

### BAR HEIGHT LEGS

- 38000LG
- 4M00LEG
- 7M00LEG
- 7ML0LEG

## SUNNY-DAY COMPATIBLE!

The 7F50 Propane Patio Heater can be converted to an umbrella base during the day by utilizing the New 7F00 Lower Estate Pole and a Commercial Market Umbrella!



7F00 Lower  
Estate Pole



7F50 Propane Patio Heater

## USE AS TABLE BASE

New for 2023, Balcony and Bar Height Table Top Adapters for the 7F50 Patio Heater. The adapter allows your Patio Heater base to double as a table base on smaller scale Balcony & Bar Tables! The Diagram shows how to create the balcony and bar combinations shown below.



7FG0 Balcony Height  
Adapter or  
7FH0 Bar Height Adapter



Appropriate style  
table top (compatible  
tops outlined below)

7F50 Propane Patio Heater



**GLASS**  
5960 36" Rd. Table  
Top Only



**VALUE  
HAMMERED**  
T980 30" Rd.  
Table Top Only



**VALUE  
HAMMERED**  
T930 36" Sq. Table  
Top Only



**VALUE  
HAMMERED**  
T900 42" Rd.  
Table Top Only



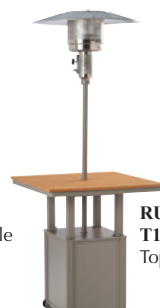
**MGP**  
T110 36" Sq. Table  
Top Only



**MGP**  
T120 42" Rd.  
Table Top Only



**MGP**  
TP90 42" Sq. Table  
Top Only



**RUSTIC**  
T110 36" Sq. Table  
Top Only



**ORIGINS**  
CP40 42" Sq. Table  
Top Only



# FIRE TABLE SELECTION

## MGP TOP FIRE TABLES & ACCESSORIES

Accent MGP colors available only on top surface of Fire Tables (sides will be same color as powdercoat frame except White frames will have Snow MGP side panels). Standard and Accent MGP Top options shown below. Electronic Ignition, 55,000 BTU (2F10 rectangle), 60,000 BTU (Round), 100,500 BTU (6F30 Rectangle), Propane or Natural Gas, includes Clear Crystal Fire Gems.

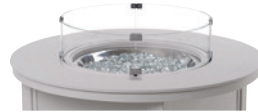


**2F40**  
42" Rd. MGP Top  
Fire Table  
42"Wx42"Dx23"H  
Weight: 91 lbs

3YR



Center Cover  
Included



**4F00-GLS**  
26" Round Glass  
Surround for 42" &  
54" Fire Tables

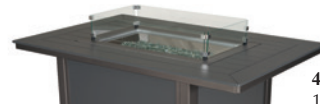


**2F10**  
36" x 54" Rect. MGP Top  
Fire Table  
36"Wx54"Dx23"H  
Weight: 98 lbs

3YR



Center Cover  
Included



**4F10-GLS**  
16" x 29" Glass  
Surround for  
36" x 54" Fire Table

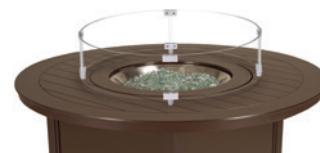


**2F70**  
54" Rd. MGP Top  
Fire Table  
54"Wx54"Dx23"H  
Weight: 96 lbs

3YR



Center Cover  
Included



**4F00-GLS**  
26" Round Glass  
Surround for 42" &  
54" Fire Tables

### AVAILABLE LIFT KITS



**2F60**  
Dining Height Lift Kit for  
2F10, 2F40, 2F70, CF20 & CF10  
27.25"Wx27.25"Dx5"H  
Combined Height: 28"  
Weight: 5 lbs



**2F50**  
Balcony Height Lift Kit for  
2F10, 2F40, 2F70, CF20 & CF10  
27.25"Wx27.25"Dx13"H  
Combined Height: 36"  
Weight: 7 lbs



**2F00**  
Bar Height Lift Kit for  
2F10, 2F40, 2F70, CF20 & CF10  
27.25"Wx27.25"Dx17"H  
Combined Height: 40"  
Weight: 8.5 lbs



NEW  
2023

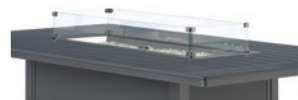


**6F30**  
48" x 84" Rect. MGP Top  
Fire Table  
47.5"Wx85.25"Dx23"H  
Weight: 168 lbs

3YR



Center Cover  
Included



**6F20-GLS**  
16" x 46" Rect. Glass  
Surround for 48" x  
84" Fire Tables

### AVAILABLE LIFT KITS



**6F60**  
Dining Height Lift Kit  
for 6F30  
48"Wx27.25"Dx5"H  
Combined Height: 28"  
Weight: 6 lbs

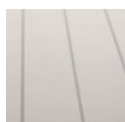


**6F50**  
Balcony Height Lift Kit  
for 6F30  
48"Wx27.25"Dx13"H  
Combined Height: 36"  
Weight: 7.5 lbs



**6F00**  
Bar Height Lift Kit for  
6F30  
48"Wx27.25"Dx17"H  
Combined Height: 40"  
Weight: 9 lbs

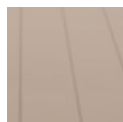
## STANDARD MARINE GRADE POLYMER SLAT TOP OPTIONS



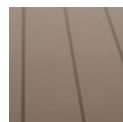
P5S Snow



PYS Warm Grey



P6S Desert



P4S Beachwood



P1S Kona



PFS Storm



P3S Classic  
Graphite



P7S Black

## ACCENT MARINE GRADE POLYMER SLAT TOP OPTIONS



Items notated with Color  
Symbol are available with  
Accent MGP Top options.



PCS Cranberry



PHS Hunter



PQS Aqua



PNS Navy



# FIRE TABLE SELECTION

## RUSTIC POLYMER TOP FIRE TABLES & ACCESSORIES

Rustic Polymer colors available only on top surface of Fire Tables (sides will be same color as powdercoat frame except White frames will have Snow MGP side panels).  
Electronic Ignition, 55,000 BTU (2F10 rectangle), 60,000 BTU (Round), 100,500 BTU (6F30 Rectangle), Propane or Natural Gas, includes Clear Crystal Fire Gems.

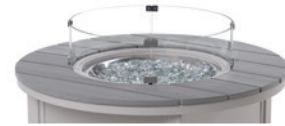


**2F40** 42" Rd. Rustic Polymer Top Fire Table  
42"Wx42"Dx23"H  
Weight: 93 lbs

**3YR**



Center Cover Included



**4F00-GLS** 26" Round Glass Surround for 42" & 54" Fire Tables



**2F10** 36" x 54" Rect. Rustic Polymer Top Fire Table  
36"Wx54"Dx23"H  
Weight: 101 lbs

**3YR**



Center Cover Included



**4F10-GLS** 16" x 29" Glass Surround for 36" x 54" Fire Table

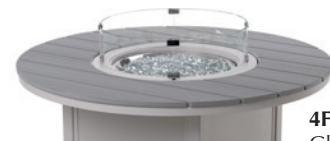


**2F70** 54" Rd. Rustic Polymer Top Fire Table  
54"Wx54"Dx23"H  
Weight: 119 lbs

**3YR**



Center Cover Included



**4F00-GLS** 26" Round Glass Surround for 42" & 54" Fire Tables

### AVAILABLE LIFT KITS



**2F60** Dining Height Lift Kit for 2F10, 2F40, 2F70, CF20 & CF10  
27.25"Wx27.25"Dx5"H  
Combined Height: 28"  
Weight: 5 lbs



**2F50** Balcony Height Lift Kit for 2F10, 2F40, 2F70, CF20 & CF10  
27.25"Wx27.25"Dx13"H  
Combined Height: 36"  
Weight: 7 lbs



**2F00** Bar Height Lift Kit for 2F10, 2F40, 2F70, CF20 & CF10  
27.25"Wx27.25"Dx17"H  
Combined Height: 40"  
Weight: 8.5 lbs



**6F30** 48" x 84" Rect. Rustic Polymer Top Fire Table  
47.5"Wx85.25"Dx23.25"H  
Weight: 182 lbs

**3YR**



Center Cover Included



**6F20-GLS** 16" x 46" Rect. Glass Surround for 48" x 84" Fire Tables

### AVAILABLE LIFT KITS



**6F60** Dining Height Lift Kit for 6F30  
48"Wx27.25"Dx5"H  
Combined Height: 28"  
Weight: 6 lbs



**6F50** Balcony Height Lift Kit for 6F30  
48"Wx27.25"Dx13"H  
Combined Height: 36"  
Weight: 7.5 lbs



**6F00** Bar Height Lift Kit for 6F30  
48"Wx27.25"Dx17"H  
Combined Height: 40"  
Weight: 9 lbs

## RUSTIC POLYMER TOP OPTIONS



RG0 Cape Grey



RX0 Boardwalk



RU0 Chestnut



RT0 Teak

NEW  
2023

**5YR** = 5 Year Contract Warranty

**3YR** = 3 Year Contract Warranty



# FIRE TABLE SELECTION

## ORIGINS TOP FIRE TABLE & ACCESSORIES

MGP sides will be same color as powdercoat frame except White frames will have Snow MGP side panels. Electronic Ignition, 55,000 BTU (rectangle), 60,000 BTU (Round), Propane or Natural Gas, includes Clear Crystal Fire Gems.

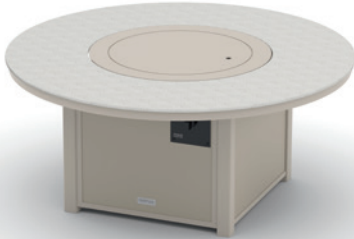


**CF20**  
36" x 54" Rect. Origins Top Fire Table  
36"Wx54"Dx23"H  
Weight: 130 lbs  
**Center Cover Included**

**3YR**



**4F10-GLS**  
16" x 29" Glass Surround  
for 36" x 54" Fire Table



**CF10**  
54" Rd. Origins Top Fire Table  
54"Wx54"Dx23"H  
Weight: 144 lbs  
**Center Cover Included**

**3YR**



**4F00-GLS**  
26" Round Glass Surround for  
42" & 54" Fire Tables

## AVAILABLE LIFT KITS



**2F60**  
Dining Height Lift Kit for  
2F10, 2F40, 2F70, CF20 & CF10  
27.25"Wx27.25"Dx5"H  
Combined Height: 28"  
Weight: 5 lbs

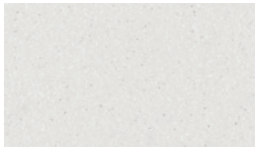


**2F50**  
Balcony Height Lift Kit for  
2F10, 2F40, 2F70, CF20 & CF10  
27.25"Wx27.25"Dx13"H  
Combined Height: 36"  
Weight: 7 lbs

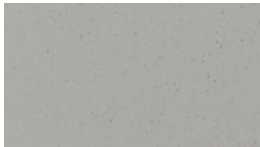


**2F00**  
Bar Height Lift Kit for  
2F10, 2F40, 2F70, CF20 & CF10  
27.25"Wx27.25"Dx17"H  
Combined Height: 40"  
Weight: 8.5 lbs

## ORIGINS FIRE TABLE TOP OPTIONS



A33 Nordic



A31 New Concrete



A32 Palermo

## Trash/Towel Receptacle

Marine Grade Polymer (MGP)/ Powdercoated Aluminum Frame • Stainless Steel Hardware



Accent MGP colors available only on the two horizontal surfaces of the Trash/Towel Receptacle (sides will be same color as powdercoat frame except Textured White frames will have Snow MGP side panels). Rustic Polymer colors not available on Trash/Towel Receptacle.



**3T00**  
Trash/Towel Receptacle  
27.5"Wx20.5"Dx40"H  
Item Weight: 64 lbs

**5YR**



TRASH ONLY  
TOWELS ONLY  
RECYCLE ONLY

30 Gallon Plastic Bin and set of 3  
adhesive placards included.





# FEATURES & BENEFITS UMBRELLAS

UMBRELLAS ON PP. 48-49

## CANTILEVER UMBRELLA

Stainless Steel Hardware throughout.

Umbrella cover features a built in tie to keep umbrella neatly closed.

Engineered to withstand 25 MPH winds

The crank lift is built for commercial use, yet designed for smooth and effortless operation in any environment.

Manufactured with extruded aluminum.

Black Polyester Protective Cover Bag included.

Full 360 degree rotation combined with the infinity tilt provides maximum shade.

Mounting options include permanent, semi-permanent, and free standing bases for installation on any surface.

## COMMERCIAL MARKET UMBRELLAS

Stainless Steel Hardware.

Unique patented design.

100% designed and manufactured in upstate New York.

Umbrella cover features a built in tie to keep umbrella neatly closed.

Customizable with a large variety of Frame and Fabric combinations available.

Commercial Market Umbrellas feature one extension arm to adjust cover fit.

**To Open... Simply Pull Upward on Two Neighboring Ribs**

Replaceable Parts and Replaceable Cover.

Extremely Durable 100% Powder Coated Aluminum Frame.

**To Close... Pull Down and Inward on Two Neighboring Fabric Panels Between the Ribs**

Our super durable support ribs are designed for maximum strength and allow the umbrella to be opened very easily from any rib.

Simple yet effective, our unique and patented (US 8,230,869 / 8,302,616) mechanisms allow you to raise and lower your umbrella by simply pulling on the ribs or pushing on the fabric. This design is especially helpful with the use of larger dining tables where access to the umbrella crank is limited. It also adds to the durability and aesthetics of the umbrella.



# Cantilever Umbrella

Aluminum Frame • Stainless Steel Hardware • Fabrics limited to six acrylic fabrics below

## CANTILEVER FRAME COLOR



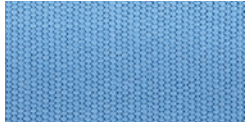
Matte Silver

## CANTILEVER COVER FABRIC OPTIONS

(Cantilever Umbrella only  
available in the fabrics  
shown below.)



13F Navy  
Grade: B  
Coordinating Cushion  
Fabric: 13A Navy



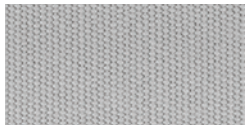
66F Capri  
Grade: B  
Coordinating Cushion  
Fabric: 66A Azure



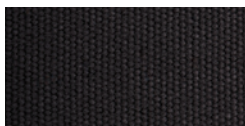
17F Linen  
Grade: B  
Coordinating Cushion  
Fabric: 17A Champagne



6F White  
Grade: B  
Coordinating Cushion  
Fabric: 6A White



99F Cadet Gray  
Grade: B



5F Black  
Grade: B  
Coordinating Cushion  
Fabric: 5A Black



NEW  
2023



3YR

### CAUM

11' Cantilever Umbrella  
Weight: 95 lbs

NEW  
2023



3YR

### CABA

33" x 34" Square Galvanized Steel Base  
w/ Wheels  
Weight: 94 lbs (before pavers installed)

**\*NOTE: (12) 16"x16" x 2" Pavers re-  
quired, not included. Base holds 3 pavers  
or 105lbs minimum per quadrant)**

NEW  
2023



### CAMP

Deck Mounting Plate

NEW  
2023



### CAGM

In-Ground Mount

**\*Must be installed by  
Professional installer**



# Commercial Market Umbrella Collection

Aluminum Frame • Patented Mechanism • Available in Sunbrella® Stock Book Program



**670 7 1/2' Commercial Market Umbrella**  
Item Weight: 13 lbs

**3YR**



**600 9' Commercial Market Umbrella**  
Item Weight: 14 lbs

**3YR**

## COMMERCIAL MARKET UMBRELLA TEXTURED POWDERCOAT FRAME COLOR OPTIONS



White

Snow

Warm Grey

Desert

Beachwood

Kona

Storm

Graphite

Black

**5YR** = 5 Year Contract Warranty











**3YR** = 3 Year Contract Warranty



## Umbrella Base Selection (For Commercial Market Umbrellas Only)

 <p><b>#12 24" Square Steel Market Base</b>  Item Weight: 55 lbs.  24" square, 5/16" thick  Overall Height: 10.5"</p> <p>#W White      #T Graphite  #6 Snow      #D Desert  #8 Black      #F Storm  #Y Warm Grey    #J Beachwood  #K Kona</p> <p>Free-standing and under table use</p> <p><b>3YR</b></p>	 <p><b>#38 21" Round Weighted Base w/ Wheels</b>  Item Weight: 80 lbs.  21" Diameter  Overall Height: 14.5"</p> <p>#W White (coordinates with White, Snow &amp; Warm Grey)  #8 Black  #T Graphite (coordinates with Storm and Graphite)  #Z Bronze (coordinates with Kona, Beachwood &amp; Desert).</p> <p>Free-Standing &amp; under table use (excluding tables using 2280 Legs)</p> <p><b>1YR</b></p>	 <p><b>#13 16" Weighted Base w/ Handle</b>  Item Weight: 45 lbs.  16" Diameter  Overall Height: 6"</p> <p>#W White (coordinates with White, Snow &amp; Warm Grey)  #8 Black  #0TT Graphite (coordinates with Storm and Graphite)  #Z Bronze (coordinates with Kona, Beachwood &amp; Desert).</p> <p>Under table use only</p> <p><b>1YR</b></p>	 <p><b>#37 24" Round Weighted Base w/ Wheels</b>  Item Weight: 120 lbs.  24" Diameter  Overall Height: 20.25"</p> <p>#W White (coordinates with White, Snow &amp; Warm Grey)  #8 Black  #T Graphite (coordinates with Storm and Graphite)  #Z Bronze (coordinates with Kona, Beachwood &amp; Desert).</p> <p>Free-Standing use only</p> <p><b>1YR</b></p>
---	--	--	--

## Furniture Accessories

 <p><b>PCMS</b>  23.5" x 75" Universal Chaise Pad</p>	 <p><b>HDPL</b>  10.5" x 23" Attachable Pillow</p> <p>Our HDPL can be used as a head pillow on our chaises and chairs, it also functions as a lumbar pillow. The elastic strap makes sure the pillow stays in place.</p>	 <p><b>LPLW</b>  12"x23" Lumbar Pillow</p>	 <p><b>HPLW</b>  17" Throw Pillow</p>
 <p><b>TPLW</b>  20" Throw Pillow</p>	 <p><b>1ABP</b>  21" x 6" Bolster Pillow</p>	 <p><b>ADA0-PLG</b>  Tall legs plugs to raise overall table height for ADA-compliance on select Tables. See table pages. (Set of 4)</p>	 <p>For extra windy locations we offer a 10 lb Weighted Add-On Bar for Sling and Strap Collections.</p> <p><b>5YR</b></p>
 <p><b>SPRDBR3</b>  Spreader Bar Tool for replacing slings</p>	 <p><b>ANC0</b>  Bench Anchor Kit (Set of 4)</p>		



# Table Selection

## OBSCURE ACRYLIC ACCESSORY TABLES



3YR

200ACR...17" Sq.  
End Table  
Overall Height: 18"



## VALUE HAMMERED MARINE GRADE POLYMER TOP TABLES

Dining, Balcony & Bar Heights. All dining, balcony and bar tables feature umbrella holes. Heights listed below represent the overall height. Mix and match table top and leg color combinations. See available Hammered MGP colors below.



- TOP ONLY** **3YR**
- **T980...** 30" Rd. Table Top Only
- LEGS ONLY**
- **2W20LEG...** Dining Height Legs only, 28.5"H
  - **3W20LEG...** Balcony Height Legs only, 36.5"H
  - **4W20LEG...** Bar Height Legs only, 40.5"H



- TOP ONLY** **3YR**
- **T980...** 30" Rd. Table Top Only
- PEDESTAL BASE ONLY**
- **2X20BAS...** Dining Height Base only, 28.5"
  - **3X20BAS...** Balcony Height Base only, 36.5"
  - **4X20BAS...** Bar Height Base only, 40.5"



- TOP ONLY** **3YR**
- **T980...** 30" Rd. Table Top Only
- 80LB WEIGHTED PEDESTAL BASE ONLY**
- **2P20BAS...** Dining Height Base only, 28.5"H
  - **3P20BAS...** Balcony Height Base only, 36.5"H
  - **4P20BAS...** Bar Height Base only, 40.5"H



- TOP ONLY** **3YR**
- **T930...** 36" Sq. Table Top Only
- LEGS ONLY**
- **2W50LEG...** Dining Height Legs only, 28.5"H
  - **3W50LEG...** Balcony Height Legs only, 36.5"H
  - **4W50LEG...** Bar Height Legs only, 40.5"H



- TOP ONLY** **3YR**
- **T930...** 36" Sq. Table Top Only
- PEDESTAL BASE ONLY**
- **2X20BAS...** Dining Height Base only, 28.5"
  - **3X20BAS...** Balcony Height Base only, 36.5"
  - **4X20BAS...** Bar Height Base only, 40.5"



- TOP ONLY** **3YR**
- **T930...** 36" Sq. Table Top Only
- 80LB WEIGHTED PEDESTAL BASE ONLY**
- **2P20BAS...** Dining Height Base only, 28.5"H
  - **3P20BAS...** Balcony Height Base only, 36.5"H
  - **4P20BAS...** Bar Height Base only, 40.5"H



- TOP ONLY** **3YR**
- **T900...** 42" Rd. Table Top Only
- LEGS ONLY**
- **2W50LEG...** Dining Height Legs only, 28.5"H
  - **3W50LEG...** Balcony Height Legs only, 36.5"H
  - **4W50LEG...** Bar Height Legs only, 40.5"H



- TOP ONLY** **3YR**
- **T900...** 42" Rd. Table Top Only
- PEDESTAL BASE ONLY**
- **2X20BAS...** Dining Height Base only, 28.5"
  - **3X20BAS...** Balcony Height Base only, 36.5"
  - **4X20BAS...** Bar Height Base only, 40.5"



- TOP ONLY** **3YR**
- **T900...** 42" Rd. Table Top Only
- 80LB WEIGHTED PEDESTAL BASE ONLY**
- **2P20BAS...** Dining Height Base only, 28.5"H
  - **3P20BAS...** Balcony Height Base only, 36.5"H
  - **4P20BAS...** Bar Height Base only, 40.5"H



- TOP ONLY** **3YR**
- **T970...** 48" Rd. Table Top Only
- LEGS ONLY**
- **2770LEG...** Dining Height Legs only, 28"H



- TOP ONLY** **3YR**
- **T970...** 48" Rd. Table Top Only
- PEDESTAL BASE ONLY**
- **2X20BAS...** Dining Height Base only, 28.5"
  - **3X20BAS...** Balcony Height Base only, 36.5"
  - **4X20BAS...** Bar Height Base only, 40.5"



- TOP ONLY** **3YR**
- **T970...** 48" Rd. Table Top Only
- 120LB WEIGHTED PEDESTAL BASE ONLY**
- **2P50BAS...** Dining Height Base only, 28.5"H
  - **3P50BAS...** Balcony Height Base only, 36.5"H
  - **4P50BAS...** Bar Height Base only, 40.5"H

## HAMMERED MARINE GRADE POLYMER TOP OPTIONS



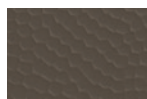
P5M Snow



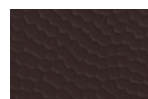
PYM Warm  
Grey



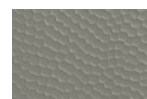
P6M Desert



P4M Beach-  
wood



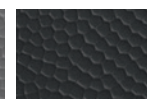
P1M Kona



PFM Storm



P3M Classic  
Graphite



P7M Black

5YR = 5 Year Contract Warranty

3YR = 3 Year Contract Warranty





## MARINE GRADE POLYMER TOP TABLES

Accessory, Coffee, Dining, Balcony & Bar Heights. All coffee, dining, balcony and bar tables feature umbrella holes unless otherwise noted. End tables have no holes. Heights listed below represent the overall height. Mix and match table top and leg color combinations. Accent MGP colors available on items marked below. See available colors on p. 54. MGP Top Fire Tables shown on p. 44.

**200...17" Square End Table**  
Overall Height: 18"  
(Smooth top only)

**6M90...17.5" Square Side Table**  
Overall Height: 24.25"  
(Smooth top only)

**5100...18" Square End Table**  
Overall Height: 19.5"  
(Smooth top only)

**18N0...18" Round End Table**  
Overall Height: 18.5"  
(Smooth top only)

**5210...10"x27" Rect. Chaise Table**  
Overall Height: 19.5"  
(Slat top only)

**5140...21" Round End Table**  
Overall Height: 19.5"  
(Slat top only)

**51B0...21" Round High End Table**  
Overall Height: 29"  
(Slat top only)

**5000...21" Square End Table**  
Overall Height: 19.5"  
(Slat top only)

**5W80...23" Round End Table**  
Overall Height: 19.75"  
(Smooth top only)

**NL80...23" Round End Table**  
Overall Height: 19.5"  
(smooth top only)

**1A90... 28.5"x28.5" Square Coffee Table, no hole**  
Overall Height: 13"  
(Slat top only)

**1A30... 28.5"x28.5" Square Corner Table, no hole**  
Overall Height: 21.5"  
(Slat top only)

**5050...21" x 42" Rect. Coffee Table, no hole**  
Overall Height: 19.5"  
(Slat top only)

**5W90...24" x 42" Oval Coffee Table, no hole**  
Overall Height: 19.75"  
(Smooth top only)

**NL30...24" x 42" Oval Coffee Table, no hole**  
Overall Height: 19.5"  
(smooth top only)

**6M10...32" x 48" Rect. Coffee Table, no hole**  
Overall Height: 18.5"  
(Slat top only)

**TOP ONLY**  
• **T300...18" x 54" Rect. Table Top Only, no hole**  
(Slat top only)

**PARSONS LEGS ONLY**  
• **5M00LEG...**Dining Height Legs only, 29"  
• **6M00LEG...**Balcony Height Legs only, 37"  
• **7M00LEG...**Bar Height Legs only, 41"

**TOP ONLY**  
• **T110...36" Square Table Top Only**  
(Slat top only)

**LEGS ONLY**  
• **2W50LEG...** Dining Height Legs only, 28.5"H  
• **3W50LEG...** Balcony Height Legs only, 36.5"H  
• **4W50LEG...** Bar Height Legs only, 40.5"H

**TOP ONLY**  
• **T110...36" Square Table Top Only**  
(Slat top only)

**PEDESTAL BASE ONLY**  
• **2X20BAS...** Dining Height Base only, 28.5"H  
• **3X20BAS...** Balcony Height Base only, 36.5"H  
• **4X20BAS...** Bar Height Base only, 40.5"H

**TOP ONLY**  
• **T110...36" Square Table Top Only**  
(Slat top only)

**80LB WEIGHTED PEDESTAL BASE ONLY**  
• **2P20BAS...** Dining Height Base only, 28.5"H  
• **3P20BAS...** Balcony Height Base only, 36.5"H  
• **4P20BAS...** Bar Height Base only, 40.5"H

**TOP ONLY**  
• **TT10...36" Square Table Top Only**  
(Slat top only)

**PARSONS LEGS ONLY**  
• **8M00LEG...** Coffee Height Legs only, 18"H  
• **5M00LEG...** Dining Height Legs only, 29"H  
• **6M00LEG...** Balcony Height Legs only, 37"H  
• **7M00LEG...** Bar Height Legs only, 41"H





- TOP ONLY** **3YR**
- **T120...** 42" Round Table Top Only (Slat top only)
- LEGS ONLY**
- **2W50LEG...** Dining Height Legs only, 28.5"H
  - **3W50LEG...** Balcony Height Legs only, 36.5"H
  - **4W50LEG...** Bar Height Legs only, 40.5"H



- TOP ONLY** **3YR**
- **T120...** 42" Round Table Top Only (Slat top only)
- PEDESTAL BASE ONLY**
- **2X20BAS...** Dining Height Base only, 28.5"H
  - **3X20BAS...** Balcony Height Base only, 36.5"H
  - **4X20BAS...** Bar Height Base only, 40.5"H



- TOP ONLY** **3YR**
- **T120...** 42" Round Table Top Only (Slat top only)
- 80LB WEIGHTED PEDESTAL BASE ONLY**
- **2P20BAS...** Dining Height Base only, 28.5"H
  - **3P20BAS...** Balcony Height Base only, 36.5"H
  - **4P20BAS...** Bar Height Base only, 40.5"H

- TOP ONLY** **3YR**
- **T090...** 42" Square Table Top Only (Slat top only)
- LEGS ONLY**
- **3730LEG...** Coffee Height Legs only, 18"H
  - **3850LEG...** Dining Height Legs only, 29"H
  - **38100LEG...** Balcony Height Legs only, 37"H
  - **38000LEG...** Bar Height Legs only, 41"H



- TOP ONLY** **3YR**
- **T090...** 42" Square Table Top Only (Slat top only)
- TAPERED LEGS ONLY**
- **NL50LEG...** Dining Height Legs only, 29"H



- TOP ONLY** **3YR**
- **TP90...** 42" Square Table Top Only (Slat top only)
- 80LB WEIGHTED PEDESTAL BASE ONLY**
- **2P20BAS...** Dining Height Base only, 28.5"H
  - **3P20BAS...** Balcony Height Base only, 36.5"H
  - **4P20BAS...** Bar Height Base only, 40.5"H



- TOP ONLY** **3YR**
- **TM80...** 48" Round Table Top Only (Slat top only)
- LEGS ONLY**
- **2280LEG...** Dining Height Legs only, 28"H



- TOP ONLY** **3YR**
- **TM80...** 48" Round Table Top Only (Slat top only)
- PEDESTAL BASE ONLY**
- **2X20BAS...** Dining Height Base only, 28.5"H
  - **3X20BAS...** Balcony Height Base only, 36.5"H
  - **4X20BAS...** Bar Height Base only, 40.5"H



- TOP ONLY** **3YR**
- **TM80...** 48" Round Table Top Only (Slat top only)
- 120LB WEIGHTED PEDESTAL BASE ONLY**
- **2P50BAS...** Dining Height Base only, 28.5"H
  - **3P50BAS...** Balcony Height Base only, 36.5"H
  - **4P50BAS...** Bar Height Base only, 40.5"H



- TOP ONLY** **3YR**
- **T020...** 54" Round Table Top Only (Slat top only)
- LEGS ONLY**
- **3730LEG...** Coffee Height Legs only, 18"H
  - **3850LEG...** Dining Height Legs only, 29"H
  - **38100LEG...** Balcony Height Legs only, 37"H
  - **38000LEG...** Bar Height Legs only, 41"H



- TOP ONLY** **3YR**
- **T020...** 54" Round Table Top Only (Slat top only)
- TAPERED LEGS ONLY**
- **NL50LEG...** Dining Height Legs only, 29"H



- TOP ONLY** **3YR**
- **TP20...** 54" Round Table Top Only (Slat top only)
- 120LB WEIGHTED PEDESTAL BASE ONLY**
- **2P50BAS...** Dining Height Base only, 28.5"H
  - **3P50BAS...** Balcony Height Base only, 36.5"H
  - **4P50BAS...** Bar Height Base only, 40.5"H



- 3YR**
- **1P80...** 32" x 64" Rect. Top Picnic Table (Slat Top Only)
- Overall Height: 29"**
- Overall Footprint: 64" x 66"**



- TOP ONLY** **3YR**
- **TM30...** 36" x 64" Rect. Top Table (Slat top only)
- PARSONS LEGS ONLY**
- **8M00LEG...** Coffee Height Legs only, 18"H
  - **5M00LEG...** Dining Height Legs only, 29"H
  - **6M00LEG...** Balcony Height Legs only, 37"H
  - **7M00LEG...** Bar Height Legs only, 41"H



- TOP ONLY** **3YR**
- **TM00...** 62" Hexagonal Table Top Only (Slat top only)
- LEGS ONLY**
- **2M00LEG...** Dining Height Legs only, 28"H
  - **3M00LEG...** Balcony Height Legs only, 36"H
  - **4M00LEG...** Bar Height Legs only, 40"H



- TOP ONLY** **3YR**
- **TP00...** 62" Hexagonal Table Top Only (Slat top only)
- 120LB WEIGHTED PEDESTAL BASE ONLY**
- **2P50BAS...** Dining Height Base only, 29"H
  - **3P50BAS...** Balcony Height Base only, 37"H
  - **4P50BAS...** Bar Height Base only, 41"H



**NEW 2023**



- TOP ONLY** **3YR**
- **TM40...** 64" Round Table Top Only (Slat top only)
- LEGS ONLY**
- **2M00LEG...** Dining Height Legs only, 28.5"H
  - **3M00LEG...** Balcony Height Legs only, 36.5"H
  - **4M00LEG...** Bar Height Legs only, 40.5"H



Symbol notates Dining table can be made ADA-Compliant using ADA0-PLG plugs shown on p.50

5YR = 5 Year Contract Warranty

3YR = 3 Year Contract Warranty





TOP ONLY  
 • **T160...** 64" Square Table Top Only (Slat top only)

LEGS ONLY   
 • **3850LEG...** Dining Height Legs only, 29"H  
 • **38100LG...** Balcony Height Legs only, 37"H  
 • **38000LG...** Bar Height Legs only, 41"H

3YR



TOP ONLY  
 • **T160...** 64" Square Table Top Only (Slat top only)

TAPERED LEGS ONLY  
 • **NL50LEG...** Dining Height Legs only, 29"H

3YR



TOP ONLY  
 • **TM60...** 42"x84" Rect. Table Top Only (Slat top only)

LEGS ONLY   
 • **3850LEG...** Dining Height Legs only, 29"H  
 • **38100LG...** Balcony Height Legs only, 37"H  
 • **38000LG...** Bar Height Legs only, 41"H

3YR



TOP ONLY  
 • **TM60...** 42"x84" Rect. Table Top Only (Slat top only)

TAPERED LEGS ONLY  
 • **NL50LEG...** Dining Height Legs only, 29"H

3YR



NEW  
2023



TOP ONLY  
 • **TMK0...** 48" x 96" Rect. Table Top Only (Slat top only)

PARSONS LEGS ONLY  
 • **5ML0LEG...** Dining Height Legs only, 28.5"H  
 • **6ML0LEG...** Balcony Height Legs only, 36.5"H  
 • **7ML0LEG...** Bar Height Legs only, 40.5"H

3YR



• **5290** 42"x120" Extension Table (Slat top only)

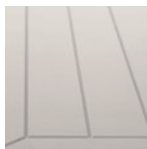
Overall Height: 29.25"

3YR



42"x88" overall when not extended  
 Two drop-in leaves included | Leaves store under each end

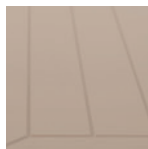
## STANDARD MARINE GRADE POLYMER SLAT TOP OPTIONS



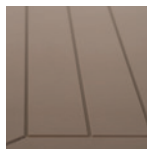
P5S Snow



PYS Warm Grey



P6S Desert



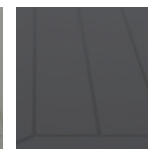
P4S Beachwood



P1S Kona



PFS Storm



P3S Classic Graphite



P7S Black

## ACCENT MARINE GRADE POLYMER SLAT TOP OPTIONS



Items notated with Color Symbol are available with Accent MGP Top options.



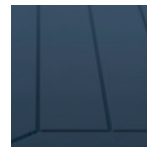
PCS Cranberry



PHS Hunter



PQS Aqua



PNS Navy



Symbol notates Dining table can be made ADA-Compliant using ADA0-PLG plugs shown on p.50





## RUSTIC POLYMER TOP TABLES

Accessory, Coffee, Dining, Balcony & Bar Heights. All coffee, dining, balcony and bar tables feature umbrella holes unless otherwise noted. End tables have no holes. Heights listed below represent the overall height. See available colors on p. 57. Rustic Polymer Top Fire Tables shown on p.45.



**5000... 21" Square End Table**  
Overall Height: 19.5"

**3YR**



**5140... 21" Round End Table**  
Overall Height: 19.5"

**3YR**



**5W80...23" Round End Table**  
Overall Height: 19.75"  
(smooth top only)

**3YR**

**NEW  
2023**



**NL80...23" Round End Table**  
Overall Height: 19.75"  
(smooth top only)

**3YR**



**5050... 21" x 42" Rect. Coffee Table, no hole**  
Overall Height: 19.5"

**3YR**



**5W90...24" x 42" Oval Coffee Table, no hole**  
Overall Height: 19.75"  
(smooth top only)

**3YR**

**NEW  
2023**



**NL30...24" x 42" Oval Coffee Table, no hole**  
Overall Height: 19.75"  
(smooth top only)

**3YR**



**51B0... 21" Round High End Table**  
Overall Height: 29"

**3YR**



**TOP ONLY**

- **T300...18" x 54" Rect. Table Top Only, no hole**

**3YR**

**PARSONS LEGS ONLY**

- **5M00LEG...**Dining Height Legs only, 29"H
- **6M00LEG...**Balcony Height Legs only, 37"H
- **7M00LEG...**Bar Height Legs only, 41"H



**TOP ONLY**

- **T110...36" Square Table Top Only**

**3YR**

**LEGS ONLY**

- **2W50LEG...** Dining Height Legs only, 28.5"H
- **3W50LEG...** Balcony Height Legs only, 36.5"H
- **4W50LEG...** Bar Height Legs only, 40.5"H



**TOP ONLY**

- **T110... 36" Square Table Top Only**

**3YR**

**PEDESTAL BASE ONLY**

- **2X20BAS...** Dining Height Base only, 28.5"H
- **3X20BAS...** Balcony Height Base only, 36.5"H
- **4X20BAS...** Bar Height Base only, 40.5"H



**TOP ONLY**

- **T110... 36" Square Table Top Only**

**3YR**

**80LB WEIGHTED PEDESTAL BASE ONLY**

- **2P20BAS...** Dining Height Base only, 28.5"H
- **3P20BAS...** Balcony Height Base only, 36.5"H
- **4P20BAS...** Bar Height Base only, 40.5"H



**TOP ONLY**

- **T110... 36" Square Table Top Only**

**3YR**

**PARSONS LEGS ONLY**

- **8M00LEG...**Coffee Height Legs only, 18"H
- **5M00LEG...**Dining Height Legs only, 29"H
- **6M00LEG...**Balcony Height Legs only, 37"H
- **7M00LEG...**Bar Height Legs only, 41"H



**TOP ONLY**

- **TM30... 36" x 64" Rect. Top Table**

**3YR**

**PARSONS LEGS ONLY**

- **8M00LEG...** Coffee Height Legs only, 18"H
- **5M00LEG...** Dining Height Legs only, 29"H
- **6M00LEG...** Balcony Height Legs only, 37"H
- **7M00LEG...** Bar Height Legs only, 41"H



- **1P80...32" x 64" Rect. Top Picnic Table**

**3YR**

**Overall Height: 29"**  
**Overall Footprint: 64" x 66"**

**5YR = 5 Year Contract Warranty**

**3YR = 3 Year Contract Warranty**






**TOP ONLY**  
**• TM80...** 48" Round Table Top Only  
**LEGS ONLY**  
**• 2280LEG...** Dining Height Legs only, 28"H

**3YR**



**TOP ONLY**  
**• T020...** 54" Round Table Top Only  
**LEGS ONLY**   
**• 3730LEG...** Coffee Height Legs only, 18"H  
**• 3850LEG...** Dining Height Legs only, 29"H  
**• 38100LEG...** Balcony Height Legs only, 37"H  
**• 38000LEG...** Bar Height Legs only, 41"H

**3YR**



**TOP ONLY**  
**• TM80...** 48" Round Table Top Only  
**PEDESTAL BASE ONLY**  
**• 2X20BAS...** Dining Height Base only, 28.5"H  
**• 3X20BAS...** Balcony Height Base only, 36.5"H  
**• 4X20BAS...** Bar Height Base only, 40.5"H

**3YR**



**TOP ONLY**  
**• T020...** 54" Round Table Top Only  
**TAPERED LEGS ONLY**  
**• NL50LEG...** Dining Height Legs only, 29"H

**3YR**



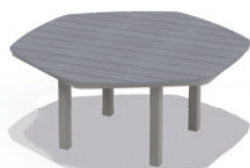
**TOP ONLY**  
**• TM80...** 48" Round Table Top Only  
**120LB WEIGHTED PEDESTAL BASE ONLY**  
**• 2P50BAS...** Dining Height Base only, 29"H  
**• 3P50BAS...** Balcony Height Base only, 37"H  
**• 4P50BAS...** Bar Height Base only, 41"H

**3YR**



**TOP ONLY**  
**• TP20...** 54" Round Table Top Only  
**120LB WEIGHTED PEDESTAL BASE ONLY**  
**• 2P50BAS...** Dining Height Base only, 29"H  
**• 3P50BAS...** Balcony Height Base only, 37"H  
**• 4P50BAS...** Bar Height Base only, 41"H

**3YR**



**TOP ONLY**  
**• TM00...** 62" Hexagonal Table Top Only  
**LEGS ONLY**  
**• 2M00LEG...** Dining Height Legs only, 28"H  
**• 3M00LEG...** Balcony Height Legs only, 36"H  
**• 4M00LEG...** Bar Height Legs only, 40"H

**3YR**



**TOP ONLY**  
**• TP00...** 62" Hexagonal Table Top Only  
**120LB WEIGHTED PEDESTAL BASE ONLY**  
**• 2P50BAS...** Dining Height Base only, 29"H  
**• 3P50BAS...** Balcony Height Base only, 37"H  
**• 4P50BAS...** Bar Height Base only, 41"H

**3YR**


**NEW  
2023**



**TOP ONLY**  
**• TM40...** 64" Round Table Top Only  
**LEGS ONLY**  
**• 2M00LEG...** Dining Height Legs only, 28.5"H  
**• 3M00LEG...** Balcony Height Legs only, 36.5"H  
**• 4M00LEG...** Bar Height Legs only, 40.5"H

**3YR**



**TOP ONLY**  
**• T160...** 64" Square Table Top Only  
**LEGS ONLY**   
**• 3850LEG...** Dining Height Legs only, 29"H  
**• 38100LEG...** Balcony Height Legs only, 37"H  
**• 38000LEG...** Bar Height Legs only, 41"H


**3YR**



**TOP ONLY**  
**• T160...** 64" Square Table Top Only  
**TAPERED LEGS ONLY**  
**• NL50LEG...** Dining Height Legs only, 29"H

**3YR**



**TOP ONLY**  
**• TM60...** 42"x84" Rect. Table Top Only  
**LEGS ONLY**   
**• 3850LEG...** Dining Height Legs only, 29"H  
**• 38100LEG...** Balcony Height Legs only, 37"H  
**• 38000LEG...** Bar Height Legs only, 41"H

**3YR**



**TOP ONLY**  
**• TM60...** 42"x84" Rect. Table Top Only  
**TAPERED LEGS ONLY**  
**• NL50LEG...** Dining Height Legs only, 29"H

**3YR**

**NEW  
2023**



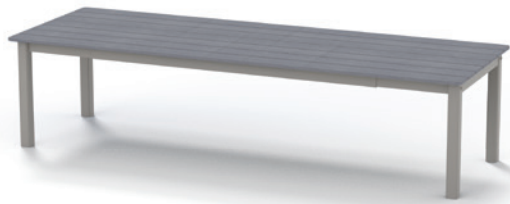
**TOP ONLY**  
**• TMK0...** 48" x 96" Rect. Table Top Only  
**PARSONS LEGS ONLY**  
**• 5ML0LEG...** Dining Height Legs only, 28.5"H  
**• 6ML0LEG...** Balcony Height Legs only, 36.5"H  
**• 7ML0LEG...** Bar Height Legs only, 40.5"H

**3YR**



Symbol notates Dining table can be made ADA-Compliant using ADA0-PLG plugs shown on p.50





3YR

5290 ...42"x120" Extension Table

Overall Height: 29.25"



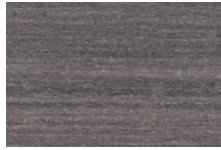
42"x88" overall when not extended

Two drop-in leaves included | Leaves store under each end

## RUSTIC POLYMER TOP OPTIONS



RG0 Cape Grey



RX0 Boardwalk



RU0 Chestnut



RT0 Teak

NEW  
2023



## ORIGINS TOP TABLES

Accessory, Coffee, Dining, Balcony & Bar Heights. All coffee, dining, balcony and bar tables feature umbrella holes unless otherwise noted. End tables have no hole. Heights listed below represent the overall height. Origins Top Fire Table Shown on p.46.



3YR

CT10...21" Round End Table

Overall Height: 19.5"



3YR

CT20...21"x42" Rect. Coffee Table, no hole

Overall Height: 19.5"



3YR

CTH0...21" Rd. High End Table, no hole

Overall Height: 29"



TOP ONLY

• CT40...42" Square Table Top Only

3YR

LEGS ONLY

- 3730LEG... Coffee Height Legs only, 18"H
- 3850LEG... Dining Height Legs only, 29"H
- 38100LG... Balcony Height Legs only, 37"H
- 38000LG... Bar Height Legs only, 41"H



TOP ONLY

• CT40...42" Square Table Top Only

3YR

TAPERED LEGS ONLY

- NL50LEG... Dining Height Legs only, 29"H



TOP ONLY

• CP40...42" Square Table Top Only

3YR

80LB WEIGHTED PEDESTAL BASE ONLY

- 2P20BAS... Dining Height Base only, 28.5"H
- 3P20BAS... Balcony Height Base only, 36.5"H
- 4P20BAS... Bar Height Base only, 40.5"H



TOP ONLY

• CT60... 54" Round Table Top Only

3YR

LEGS ONLY

- 3730LEG... Coffee Height Legs only, 18"H
- 3850LEG... Dining Height Legs only, 29"H
- 38100LG... Balcony Height Legs only, 37"H
- 38000LG... Bar Height Legs only, 41"H



TOP ONLY

• CT60... 54" Round Table Top Only

3YR

TAPERED LEGS ONLY

- NL50LEG... Dining Height Legs only, 29"H



TOP ONLY

• CP60... 54" Round Table Top Only

3YR

120LB WEIGHTED PEDESTAL BASE ONLY


- 2P50BAS... Dining Height Base only, 29"H
- 3P50BAS... Balcony Height Base only, 37"H
- 4P50BAS... Bar Height Base only, 41"H

5YR = 5 Year Contract Warranty

3YR = 3 Year Contract Warranty





- TOP ONLY**  
 • **CT50...** 42"x84" Rect.Table Top Only
- LEGS ONLY**   
 • **3850LEG...** Dining Height Legs only, 29"H  
 • **38100LG...** Balcony Height Legs only, 37"H  
 • **38000LG...** Bar Height Legs only, 41"H

**3YR**



- TOP ONLY**  
 • **CT50...** 42"x84" Rect.Table Top Only
- TAPERED LEGS ONLY**  
 • **NL50LEG...** Dining Height Legs only, 29"H

**3YR**

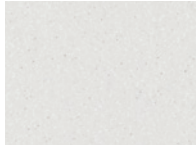
## ORIGINS TABLE TOP OPTIONS



A31 New Concrete



A32 Palermo



A33 Nordic



Symbol notates Dining table can be made ADA-Compliant using ADA0-PLG plugs shown on p.50

# RECENT INSTALLATIONS



JENKINSON BREAKWATER BEACH PARK,  
SEASIDE HEIGHTS, NJ



LAKE GEORGE, NY



THE TIDES AT SOUTH TEMPE  
TEMPE, AZ



# RECENT INSTALLATIONS



**BAY 151 APARTMENTS  
BAYONNE, NJ**



**DORSET FIELD CLUB  
DORSET, VT**



**SOAKY MOUNTAIN WATERPARK  
SEVIERVILLE, TN**



**LAKE GEORGE RV PARK,  
LAKE GEORGE, NY**



# PROPER CARE, CLEANING & MAINTENANCE

In order to keep your Telescope Casual products looking great for many years to come, we recommend the below instructions for proper care, cleaning and maintenance.

## SOLUTION DYED ACRYLICS (CUSHION & UMBRELLA) & MESH FABRICS (SLING)



Spot wash dirt with lukewarm water and a mild soap. Rinse thoroughly with clean water, then air-dry. To clean stubborn stains, in a ventilated area, prepare a mild solution of one cup bleach plus two caps full of a natural soap per gallon of water. Spray the entire area, and scrub vigorously if necessary. For stubborn stains use a soft bristle brush. Rinse and allow to dry. Do not use pine oil cleaners on cushion or sling fabrics. For Sunbrella fabrics, blot (don't rub) liquid spills with a clean, dry cloth. For oil-based spills, apply an absorbent such as corn starch, then remove with a straight edge. Spray on a mild cleaning solution of soap (such as Dawn or Woolite) and water. Rinse the fabric thoroughly to remove all soap residue. Air dry.

## POWDERCOAT FINISH ON ALUMINUM



To keep furniture looking new, use Soft Scrub or similar non-abrasive products to remove scuff marks and scratches. Use lemon oil for protection and natural soap and water for cleaning. Powder coating is one of the most durable protective coatings available for metal surfaces, but proper care will help prolong the finish. Over time, powder coated finishes exposed to the elements may show signs of weathering such as reduced gloss and slight color loss. A consistent schedule of cleaning the surface will help remove dirt, grime and other surface buildup that may be harmful to the powder coating finish. We do not recommend using chemical cleaners such as Acetone, Mineral Spirits or Lacquer thinners. Any type of chemical that is harmful to the powder coat surface should be removed or cleaned immediately.

## MARINE GRADE POLYMER (MGP) & RUSTIC POLYMER



Avoid teak oil and other products that can stain the finish. Avoid heat sources that exceed 180 degrees F. Only routine cleaning with common detergents is required. Nylon scrub pads and brushes should be used with care because excessive force can mar the finish. For resistant stains, apply bleach and allow to soak in. Use citrus cleaner, alcohol or mineral spirits to remove grease or oil stains. Automotive silicone spray products or household furniture polish can help to hide scratches in the surface.

## VINYL STRAP FURNITURE



Telescope Straps can be cleaned using a soapy solution of warm water and Ivory Liquid. Hose down to rinse. **DO NOT USE PINE OIL CLEANSERS OR HARSH ABRASIVES.** Straps can be easily replaced by the consumer by heating the strap in hot water and attaching it to the frame while hot. As the straps cool down, they will shrink for a snug fit.

## TABLE TOPS



For tables with a powder coat finish or a polymer surface, follow directions above. For Origins Top tables, use dish soap and water. For other tables, use standard counter top cleaners and protectors.

## WINTER MAINTENANCE



Furniture that will be stored outside or in other cold areas must be drained of any water to avoid freeze/ice damage in the tubing. Freeze/ice damage is not covered under warranty.



For more information contact your local Telescope Contract Furniture supplier or Contact the following:

## NATIONAL SALES MANAGER

Matt Pisani  
82 Church St. Granville, NY 12832  
Phone (518) 642-1100 x367  
MPisani@TelescopeCasual.com

## FACTORY & CORPORATE HEADQUARTERS

Telescope Casual Furniture, Inc.  
82 Church Street  
Granville, NY 12832  
Phone (518) 642-1100 Fax (518) 642-2536

## LIMITED WARRANTY

For clarity in this Contract Catalog, we use the following terminology to indicate the contract warranty.  
**5yr** = 5 Year Contract Warranty. **3yr** = 3 Year Contract Warranty. **1yr** = 1 Year Contract Warranty.

### Limited Warranty

**Frames and Powder Coat:** If your Telescope powder coat aluminum frame, marine grade polymer frame, or rustic polymer frame fails structurally during normal usage within the applicable warranty period (as defined below), we will repair or replace the frame without charge, parts and labor included. (In the case of discontinued models or finishes, we will replace the item with the closest comparable current model.) If Telescope agrees to have an authorized dealer make the repairs, a maximum labor charge must be agreed upon by both Telescope and the dealer before work can commence. Products covered by our frame warranty are identified in our full line catalog as either **15/5**, **15/3**, **15/1** or no identification at all. **15/5** indicates a frame warranty period of 15 years in residential use/5 years in contract use. **15/3** indicates a frame warranty period of 15 years in residential use/3 years in contract use. **15/1** indicates a frame warranty period of 15 years in residential use/1 year in contract use. No indication indicates a frame warranty period of 1 year in residential use and that there is no frame warranty in contract use. All warranty periods commence on the date of purchase by the consumer or contract customer. Contract use includes any rental, business, commercial, institutional, or other non-residential use.

Marine Grade Polymer and Rustic Polymer materials used in our products are warranted against rot, cracking, splintering and decay for the length of the applicable warranty period defined above.

The powder coat finish on our powder coat aluminum frame furniture is warranted against peeling, cracking or blistering for a period of 3 years from the date of purchase. Failure of the powder coat finish due to abrasion, including abrasion caused by stacking the furniture against other furniture or scraping against other surfaces, is not covered by this warranty. Exposure to salt water or salt air may cause powder coat finishes to blister due to oxidization of the metal; such blistering and oxidization are not covered by this warranty. Fading, staining and scratching of marine grade polymer or rustic polymer surfaces is not covered by this warranty. Rusting of any steel or stainless steel components is not covered by this warranty.

The following products are not covered by our frame and powder coat warranties: table tops, umbrellas, umbrella bases, wood furniture, cushions, slings, straps, and folding aluminum furniture.

**Non-Glass Table Tops:** Non-glass table tops are warranted to be free from manufacturing defects for 3 years from date of purchase. Fading or staining of the table surface is not included under warranty. Tables must not be stored upside down.

**Umbrellas and Umbrella Bases:** Umbrella frames and umbrella bases are warranted to be free of manufacturing defects for either 1 year or 3 years from the date of purchase, as identified in our full line catalog and price lists by the following indicators: **3/3** indicates 3 years in residential use/3 years in contract use; **1/1** indicates 1 year in residential use/1 year in contract use. Steel bases, if not properly maintained, will rust if the finish is scratched through to the metal. Rust is not covered under warranty. Umbrella covers/fabric are warranted to be free from manufacturing defects for 1 year from the date of purchase.

**Wood Furniture, Cushions, Slings, and Folding Aluminum Furniture:** Wood furniture, cushions, slings, and folding aluminum furniture are warranted to be free of manufacturing defects for 1 year from the date of purchase.

**Vinyl Straps:** Vinyl straps are warranted against breakage and gross discoloration for a period of 3 years from the date of purchase. In the case of breakage or gross discoloration (our judgment), replacement straps will be provided but labor is not included.

**Fire Table Burner Warranty:** The burner and control panel are warranted by the manufacturer to be free from defects in material and workmanship for a period of one year from its date of purchase. Please refer to the full warranty in the user manual included in the burner unit packaging.

**Patio Heater Warranty:** The burner and controls are warranted to be free of manufacturing defects for a period of one year from date of purchase. Bending or denting the aluminum deflector is not covered under warranty. Damage caused by the heater tipping over is not covered under warranty.

**Other Warranty Limitations and Exclusions:** The natural weathering of wood finishes, breakage of glass, fading, staining and mildewing of fabrics, slings and strapping, the compression of cushion fillings, the stretching of slings, and the rusting of umbrella bases or pedestal bases are not covered under our warranties. Warranty is void unless routine maintenance of product is performed, such as tightening of screws and bolts, regular care and cleaning.

**Furniture Covers:** Telescope Furniture covers are warranted to be free of manufacturing defects for one year from date of purchase. Furniture covers not made by Telescope Casual Furniture, Inc. could cause damage to the surface finish of our furniture. Such damage is not covered by this warranty.

Freeze or ice damage is not covered by our warranties. Furniture stored outside or in other cold storage should be drained of any water. If allowed to freeze inside the furniture, water can damage the tubing.

These warranties do not cover the failure of furniture caused by acts of God, accident, neglect, improper shipping or handling, or by unreasonable or abusive use, and these warranties are void if our care and maintenance instructions were not properly followed. Furniture used in a contract (commercial) setting is not warranted unless it is specifically designated for contract or commercial use in our catalog.

All warranties are to the original purchaser from authorized dealers only. Warranties are not transferable. Warranties are for repair, replacement or substitution only, in our sole discretion. **Warranty service of any kind does not extend the warranty period.**

THESE WARRANTIES ARE IN LIEU OF ANY OTHER WARRANTIES, EXPRESS OR IMPLIED, INCLUDING BUT NOT LIMITED TO, THE IMPLIED WARRANTIES OF MERCHANTABILITY AND FITNESS FOR A PARTICULAR PURPOSE. IN NO EVENT WILL TELESCOPE CASUAL FURNITURE, INC. BE LIABLE FOR INCIDENTAL OR CONSEQUENTIAL DAMAGES, EVEN IF IT HAD REASON TO KNOW IN ADVANCE THAT SUCH DAMAGES WERE POSSIBLE. THESE WARRANTIES GIVE YOU SPECIFIC LEGAL RIGHTS AND YOU MAY HAVE OTHER RIGHTS THAT VARY FROM JURISDICTION TO JURISDICTION. SOME JURISDICTIONS DO NOT ALLOW THE EXCLUSION OF IMPLIED WARRANTIES OR THE LIMITATION OF DAMAGES, SO THE ABOVE EXCLUSION AND LIMITATIONS MAY NOT APPLY TO YOU. IN THE EVENT THE WARRANTY EXCLUSIONS DO NOT APPLY TO YOU, THEN, WHERE LEGALLY PERMISSIBLE, SUCH WARRANTIES ARE LIMITED IN DURATION TO THE APPLICABLE WARRANTY PERIOD AND NO WARRANTIES APPLY AFTER THAT PERIOD.

**How to Obtain Warranty Service:** If you are a consumer, first go to an authorized Telescope dealer. If the dealer cannot resolve the issue, they must contact our Customer Service Department in writing at Telescope Casual Furniture, Inc., 82 Church Street, Granville, NY 12832 or email to warranty@TelescopeCasual.com, stating the problem, providing pictures and providing proof of purchase. A Return Merchandise Authorization Request Form will be sent to the dealer requesting details and giving instructions for returning items if necessary. If the Request is approved, the dealer will receive a Return Merchandise Authorization Number. No returns will be accepted without prior written authorization from our Customer Service Department. After authorization is received the furniture must be returned to us in proper packaging, freight prepaid, with the Return Merchandise Authorization Number clearly marked on the cartons. Telescope will cover the cost of shipping repaired or replacement items only to addresses within the contiguous 48 United States.

### Shipping Policy

**Warehousing Fees:** Any retail or commercial order stored at the factory due to a delay caused by the customer is subject to warehousing fees at our discretion.





**National Sales Manager**

**MATT PISANI**

**82 CHURCH STREET. GRANVILLE, NY 12832**

**(518) 642-1100 x367**

**MPisani@TelescopeCasual.com**

**Factory & Corporate Headquarters**

**82 Church Street**

**Granville, New York 12832 USA**

**(518) 642-1100**

**Fax (518) 642-2536**

**Proudly Made in the USA - Since 1903**

**FOR A FULL LIST OF CONTRACT SALES REPRESENTATIVES  
PLEASE VISIT: [WWW.TELESCOPECONTRACT.COM](http://WWW.TELESCOPECONTRACT.COM)**